

Product datasheet for **CB526723**

Frozen Tissue Blocks, Lung

Product data:

Product Type:	Frozen Blocks
Disease State:	Other Disease
Diagnosis Category:	Chronic Obstructive Pulmonary Disease (COPD)
Tissue:	Lung
Frozen Sample ID:	FR0002956F
Case ID:	CI0000010069
Tissue of Origin:	Lung
Site of Finding:	Lung
Appearance:	Lesion
Sample Diagnosis (from Pathology Verification):	Emphysema, centrilobular
Normal:	0%
Lesional:	100%
Tumor:	0%
Tumor Hypo/Acellular Stroma:	0%
Tumor Hypercellular Stroma:	0%
Necrosis:	0%
Pathology Verification notes from H&E review:	100% No normal architecture
CASE Diagnosis (from medical center path report):	Carcinoma of lung, squamous cell
Age:	80
Gender:	Female
Tumor Grade:	n/a



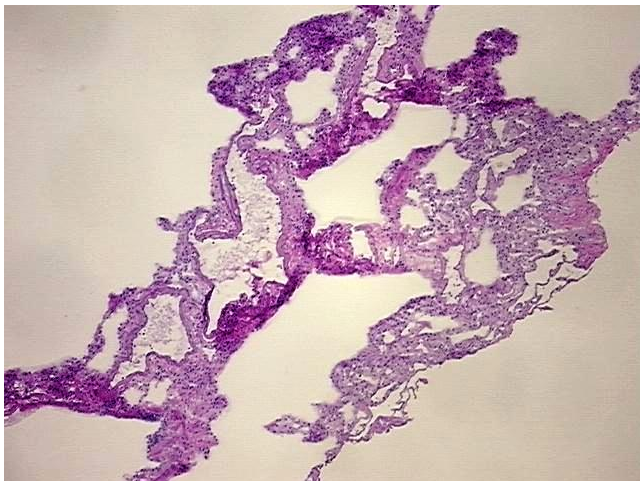
[View online »](#)

Minimum Stage Grouping: n/a

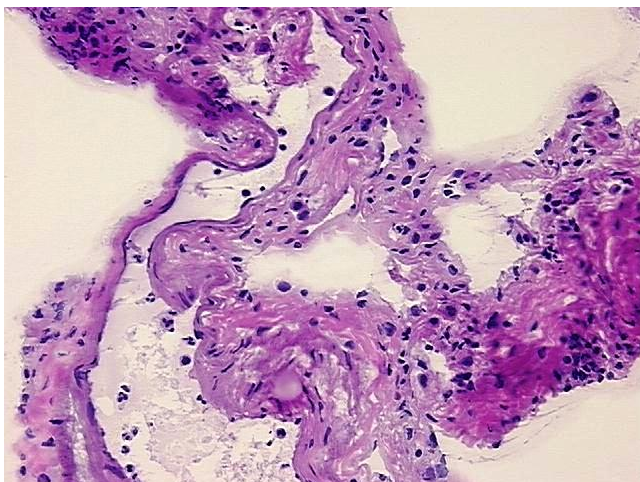
Storage: Store frozen tissue blocks at -80°C.

Stability: Frozen tissue blocks are stable for at least one year from date of shipping when stored at -80°C.

Product images:



4x Image



20x Image