

Product datasheet for **CB522921**

Frozen Tissue Blocks, Lymphoid tissue

Product data:

Product Type:	Frozen Blocks
Disease State:	Cancer
Diagnosis Category:	Leukemia
Tissue:	Lymphoid tissue
Frozen Sample ID:	FR000228B9
Case ID:	CI0000008939
Tissue of Origin:	Lymphoid tissue
Site of Finding:	Spleen
Appearance:	Tumor
Sample Diagnosis (from Pathology Verification):	Leukemia, hairy cell
Normal:	5%
Lesional:	0%
Tumor:	90%
Tumor Hypo/Acellular Stroma:	0%
Tumor Hypercellular Stroma:	5%
Necrosis:	0%
CASE Diagnosis (from medical center path report):	Leukemia, hairy cell
Age:	73
Gender:	Male
Tumor Grade:	Not Reported
Minimum Stage Grouping:	IV

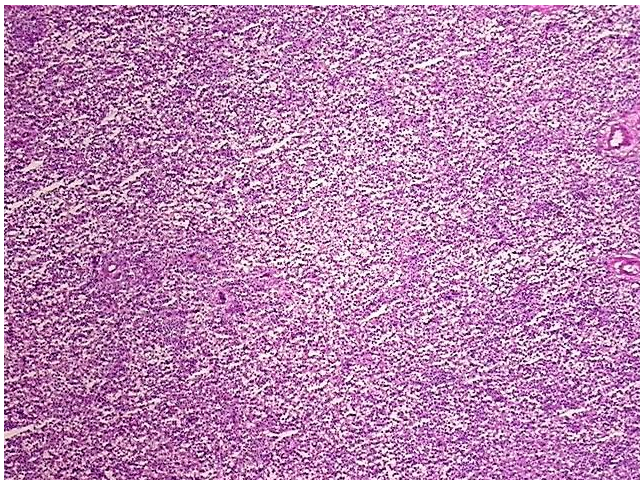


[View online »](#)

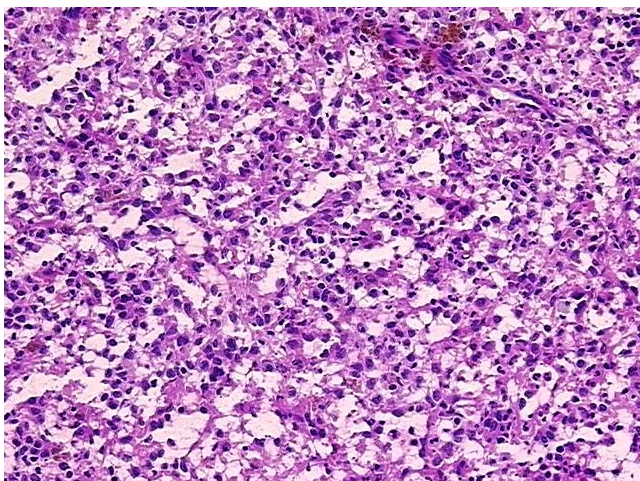
Storage: Store frozen tissue blocks at -80°C.

Stability: Frozen tissue blocks are stable for at least one year from date of shipping when stored at -80°C.

Product images:



4x Image



20x Image