

## Product datasheet for **CB521570**

### Frozen Tissue Blocks, Pancreas

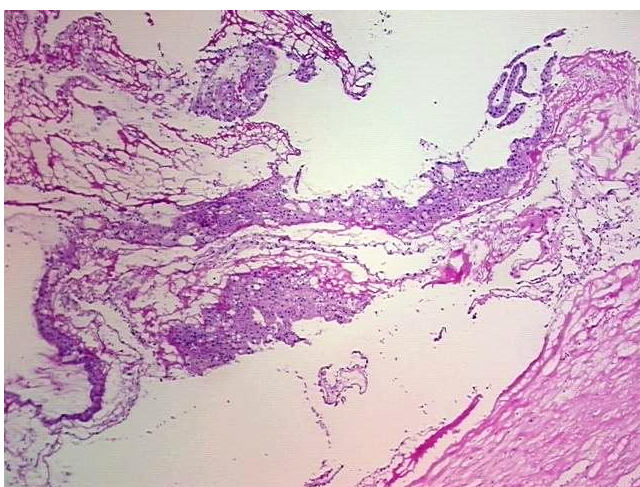
#### Product data:

|   |  |
|---|--|
| Product Type:                                     | Frozen Blocks                            |
| Disease State:                                    | Cancer                                   |
| Diagnosis Category:                               | Pancreatic Cancer                        |
| Tissue:   | Pancreas                                 |
| Frozen Sample ID:                                 | FR71B9D932                               |
| Case ID:  | CI0000008557                             |
| Tissue of Origin:                                 | Pancreas                                 |
| Site of Finding:                                  | Pancreas                                 |
| Appearance:                                       | Tumor                                    |
| Sample Diagnosis (from Pathology Verification):   | Cystadenocarcinoma of pancreas, mucinous |
| Normal:   | 0%                                       |
| Lesional:   | 0%                                       |
| Tumor:  | 30%                                      |
| Tumor Hypo/Acellular Stroma:                      | 35%                                      |
| Tumor Hypercellular Stroma:                       | 0%                                       |
| Necrosis:   | 35%                                      |
| Pathology Verification notes from H&E review:     | hypo/acellular stroma: 100% fibrosis     |
| CASE Diagnosis (from medical center path report): | Cystadenocarcinoma of pancreas, mucinous |
| Age:  | 55                                       |
| Gender:   | Female                                   |
| Tumor Grade:                                      | Not Reported                             |

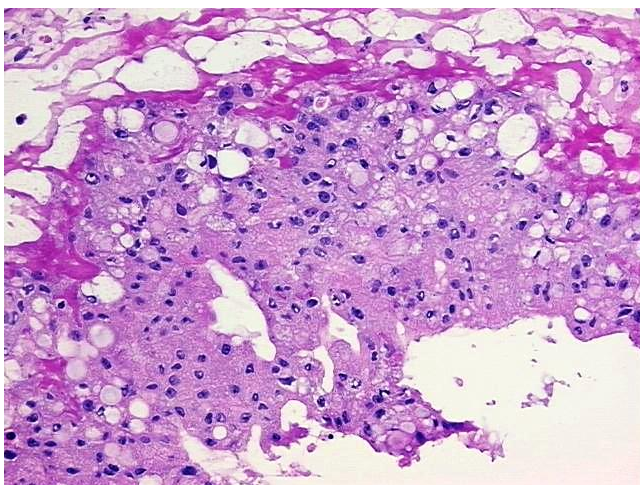


[View online »](#)

|                              |   |
|------------------------------|---|
| Minimum Stage Grouping:      | IB  |
| T (Extent of Primary Tumor): | pT2   |
| N (Lymph node metastasis):   | pN0   |
| M (Distant metastasis):      | pMX   |
| Storage:                     | Store frozen tissue blocks at -80°C.  |
| Stability:                   | Frozen tissue blocks are stable for at least one year from date of shipping when stored at -80°C. |

**Product images:**

4x Image



20x Image