

Product datasheet for **CB520895**

Frozen Tissue Blocks, Parotid gland

Product data:

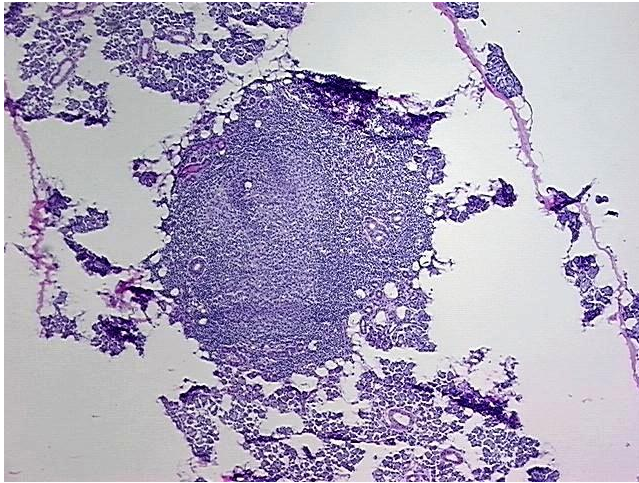
Product Type:	Frozen Blocks
Disease State:	Other Disease
Diagnosis Category:	Inflammation (various)
Tissue:	Parotid gland
Frozen Sample ID:	FR00024C0D
Case ID:	CI0000008386
Tissue of Origin:	Parotid gland
Site of Finding:	Parotid gland
Appearance:	Lesion
Sample Diagnosis (from Pathology Verification):	Sialadenitis, chronic
Normal:	0%
Lesional:	100%
Tumor:	0%
Tumor Hypo/Acellular Stroma:	0%
Tumor Hypercellular Stroma:	0%
Necrosis:	0%
Pathology Verification notes from H&E review:	Inflammation: Moderate Lymphoid infiltrate; 50% Epithelium, 50% Stroma
CASE Diagnosis (from medical center path report):	Cyst of salivary duct
Age:	70
Gender:	Female
Storage:	Store frozen tissue blocks at -80°C.



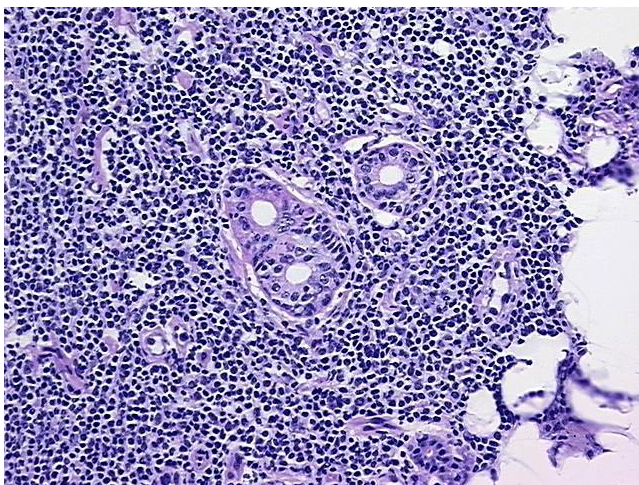
[View online »](#)

Stability: Frozen tissue blocks are stable for at least one year from date of shipping when stored at -80°C.

Product images:



4x Image



20x Image