

Product datasheet for **CB519285**

Frozen Tissue Blocks, Pancreas

Product data:

Product Type:	Frozen Blocks
Disease State:	Cancer
Diagnosis Category:	Carcinoid/Neuroendocrine Tumors
Tissue:	Pancreas
Frozen Sample ID:	FR000207CC
Case ID:	CI0000008064
Tissue of Origin:	Pancreas
Site of Finding:	Pancreas
Appearance:	Tumor
Sample Diagnosis (from Pathology Verification):	Tumor of pancreas, neuroendocrine
Normal:	0%
Lesional:	0%
Tumor:	70%
Tumor Hypo/Acellular Stroma:	20%
Tumor Hypercellular Stroma:	10%
Necrosis:	0%
Pathology Verification notes from H&E review:	tumor contains 20% acellular stroma with hyalinization consistent with post-chemotherapy effect
CASE Diagnosis (from medical center path report):	Tumor of pancreas, Islet cell
Age:	51
Gender:	Male
Tumor Grade:	Not Reported



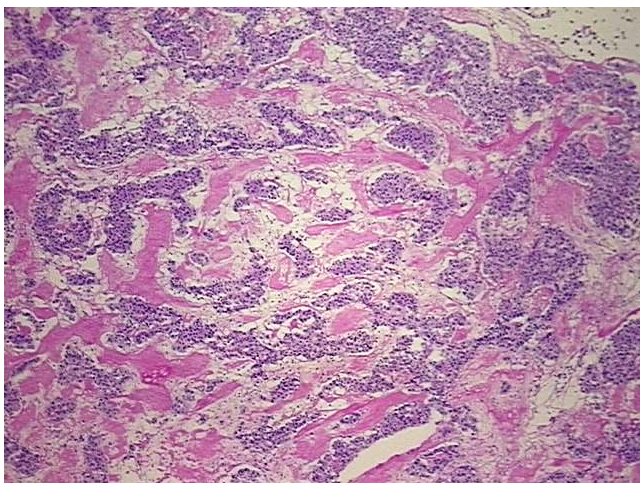
[View online »](#)

Minimum Stage Grouping: Not Reported

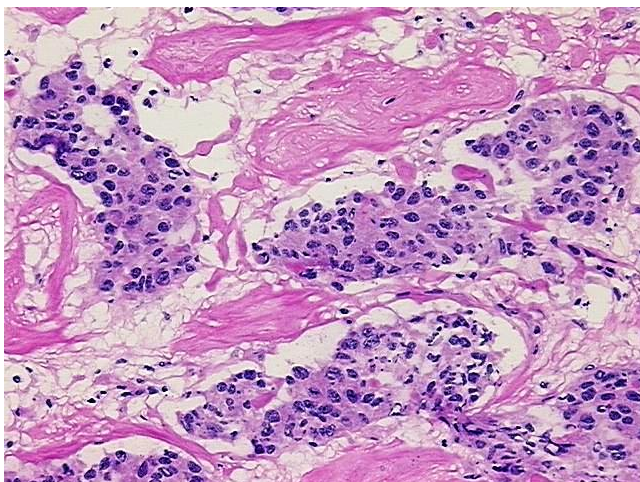
Storage: Store frozen tissue blocks at -80°C.

Stability: Frozen tissue blocks are stable for at least one year from date of shipping when stored at -80°C.

Product images:



4x Image



20x Image