

Product datasheet for **CB516307**

Frozen Tissue Blocks, Pleura

Product data:

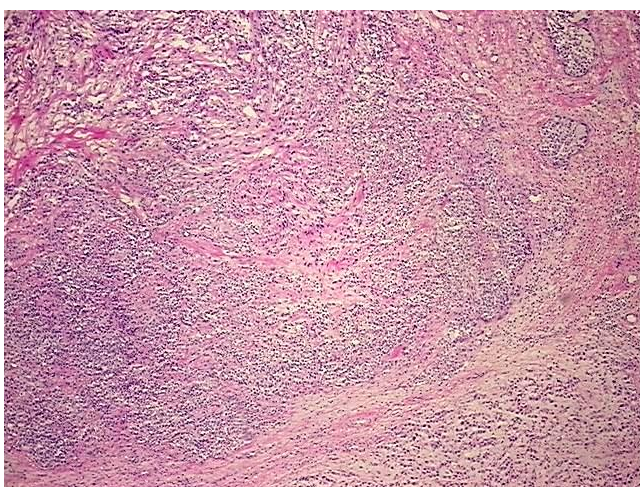
Product Type:	Frozen Blocks
Disease State:	Cancer
Diagnosis Category:	Mesothelioma
Tissue:	Pleura
Frozen Sample ID:	FR5B3387D4
Case ID:	CI0000007512
Tissue of Origin:	Pleura
Site of Finding:	Pleura
Appearance:	Tumor
Sample Diagnosis (from Pathology Verification):	Mesothelioma of pleura, mixed
Normal:	0%
Lesional:	0%
Tumor:	70%
Tumor Hypo/Acellular Stroma:	30%
Tumor Hypercellular Stroma:	0%
Necrosis:	0%
Pathology Verification notes from H&E review:	Tumor Stroma (Hypo/Acellular): Fibrosis
CASE Diagnosis (from medical center path report):	Mesothelioma of pleura, mixed
Age:	69
Gender:	Male
Tumor Grade:	Not Reported



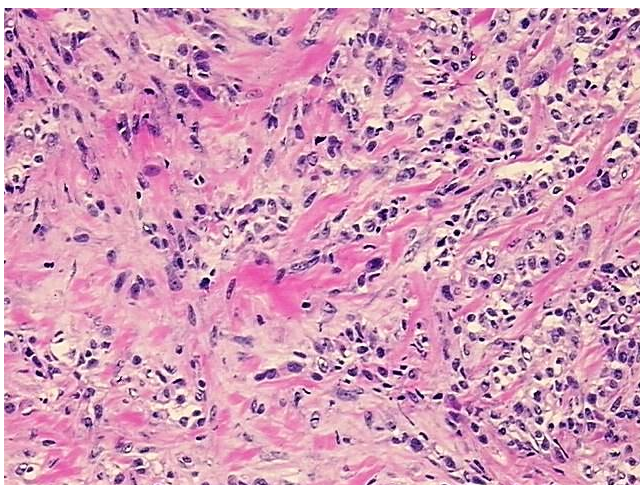
[View online »](#)

Minimum Stage Grouping:	I
T (Extent of Primary Tumor):	pT1
N (Lymph node metastasis):	pNX
M (Distant metastasis):	pMX
Storage:	Store frozen tissue blocks at -80°C.
Stability:	Frozen tissue blocks are stable for at least one year from date of shipping when stored at -80°C.

Product images:



4x Image



20x Image