

## Product datasheet for **CB513124**

### Frozen Tissue Blocks, Colon: sigmoid

#### Product data:

Product Type:	Frozen Blocks
Disease State:	Cancer
Diagnosis Category:	Colorectal Cancer
Tissue:	Colon
Frozen Sample ID:	FR5B33AB06
Case ID:	CI0000006940
Tissue of Origin:	Colon: sigmoid
Site of Finding:	Liver
Appearance:	Tumor
Sample Diagnosis (from Pathology Verification):	Adenocarcinoma of colon, metastatic
Normal:	0%
Lesional:	0%
Tumor:	20%
Tumor Hypo/Acellular Stroma:	10%
Tumor Hypercellular Stroma:	10%
Necrosis:	60%
CASE Diagnosis (from medical center path report):	Adenocarcinoma of colon, metastatic
Age:	51
Gender:	Female
Tumor Grade:	Not Reported
Minimum Stage Grouping:	IV



[View online »](#)

T (Extent of Primary Tumor): pTX

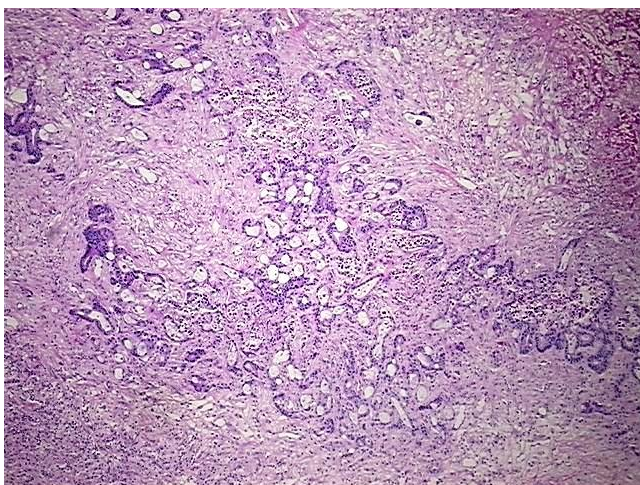
N (Lymph node metastasis): pNX

M (Distant metastasis): pM1

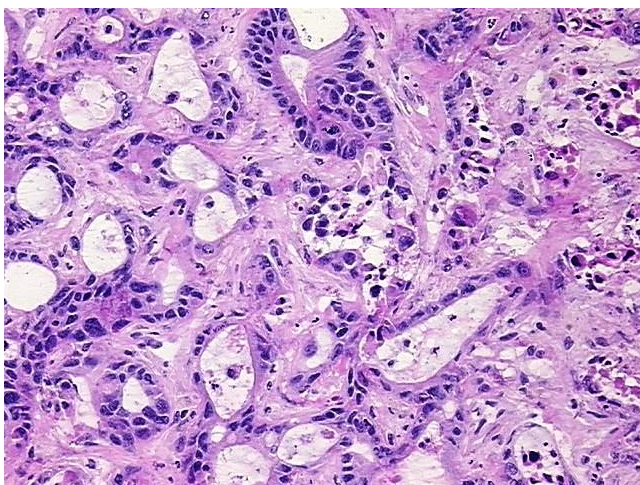
Storage: Store frozen tissue blocks at -80°C.

Stability: Frozen tissue blocks are stable for at least one year from date of shipping when stored at -80°C.

### Product images:



4x Image



20x Image