

Product datasheet for **CB511603**

Frozen Tissue Blocks, Prostate

Product data:

| | |
|---|--|
| Product Type: | Frozen Blocks |
| Disease State: | Other Disease |
| Diagnosis Category: | Neoplasia |
| Tissue: | Prostate |
| Frozen Sample ID: | FR0001E2F5 |
| Case ID: | CI0000006771 |
| Tissue of Origin: | Prostate |
| Site of Finding: | Prostate |
| Appearance: | Lesion |
| Sample Diagnosis (from Pathology Verification): | Prostatic intraepithelial neoplasia |
| Normal: | 85% |
| Lesional: | 15% |
| Tumor: | 0% |
| Tumor Hypo/Acellular Stroma: | 0% |
| Tumor Hypercellular Stroma: | 0% |
| Necrosis: | 0% |
| Pathology Verification notes from H&E review: | normal: 40% epithelium, 60% fibromuscular stroma; lesion: high grade prostatic intraepithelial neoplasia (PIN) |
| CASE Diagnosis (from medical center path report): | Adenocarcinoma of prostate |
| Age: | 63 |
| Gender: | Male |
| Tumor Grade: | n/a |



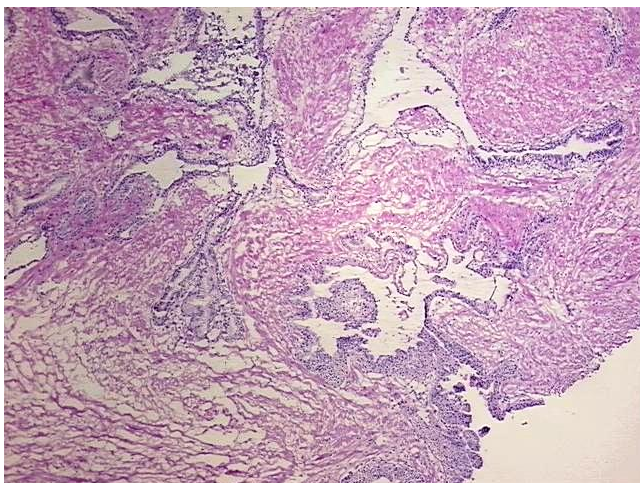
[View online »](#)

Minimum Stage Grouping: n/a

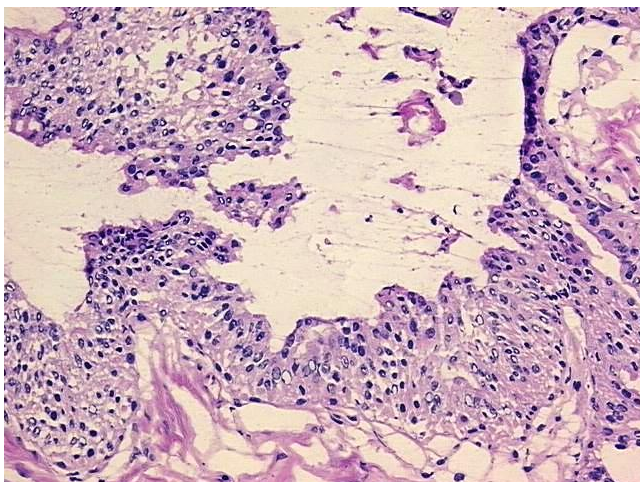
Storage: Store frozen tissue blocks at -80°C.

Stability: Frozen tissue blocks are stable for at least one year from date of shipping when stored at -80°C.

Product images:



4x Image



20x Image