

Product datasheet for **CB511103**

Frozen Tissue Blocks, Colon: transverse

Product data:

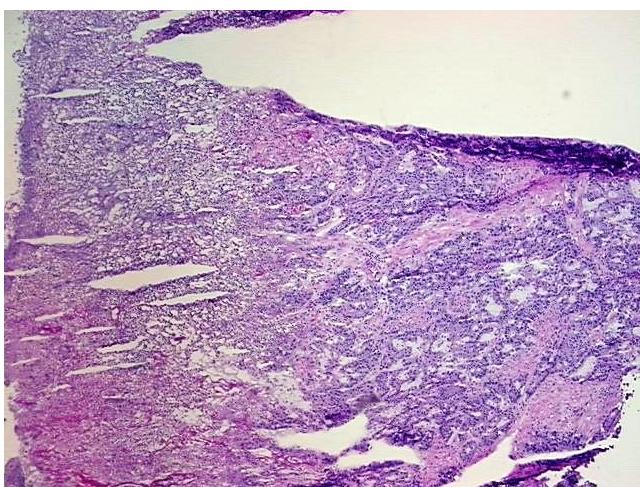
Product Type:	Frozen Blocks
Disease State:	Cancer
Diagnosis Category:	Colorectal Cancer
Tissue:	Colon
Frozen Sample ID:	FR0001B142
Case ID:	CI0000006679
Tissue of Origin:	Colon: transverse
Site of Finding:	Colon: transverse
Appearance:	Tumor
Sample Diagnosis (from Pathology Verification):	Adenocarcinoma of colon
Normal:	65%
Lesional:	0%
Tumor:	20%
Tumor Hypo/Acellular Stroma:	0%
Tumor Hypercellular Stroma:	5%
Necrosis:	10%
Pathology Verification notes from H&E review:	Tumor: with mucinous features and arising from pre-existing adenoma; Other Features/Comments: normal: 10% mucosa, 40% submucosa, 50% muscle
CASE Diagnosis (from medical center path report):	Adenocarcinoma of colon
Age:	70
Gender:	Female
Tumor Grade:	AJCC G2: Moderately differentiated



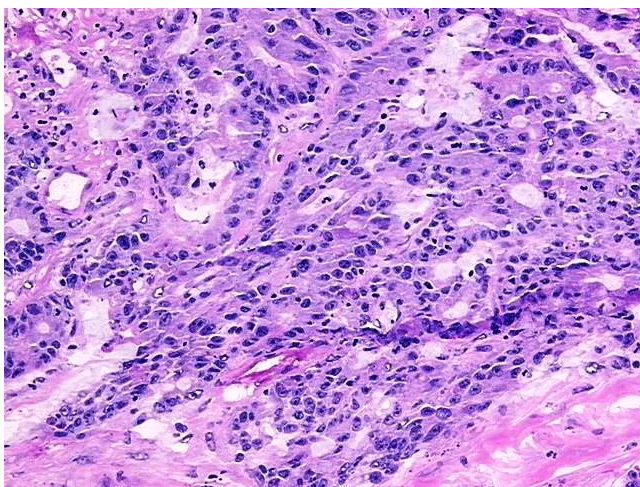
[View online »](#)

Minimum Stage Grouping:	IIA
T (Extent of Primary Tumor):	pT3
N (Lymph node metastasis):	pN0
M (Distant metastasis):	pMX
Storage:	Store frozen tissue blocks at -80°C.
Stability:	Frozen tissue blocks are stable for at least one year from date of shipping when stored at -80°C.

Product images:



4x Image



20x Image