

Product datasheet for **CB511048**

Frozen Tissue Blocks, Colon

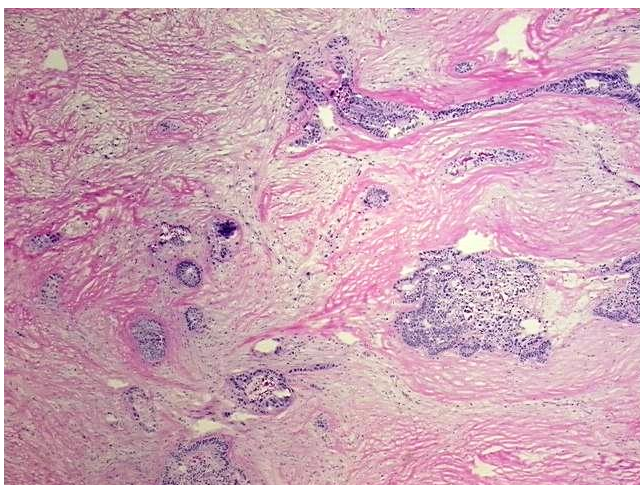
Product data:

| | |
|---|---|
| Product Type: | Frozen Blocks |
| Disease State: | Cancer |
| Diagnosis Category: | Colorectal Cancer |
| Tissue: | Colon |
| Frozen Sample ID: | FR0001AF20 |
| Case ID: | CI0000006674 |
| Tissue of Origin: | Colon |
| Site of Finding: | Ovary |
| Appearance: | Tumor |
| Sample Diagnosis (from Pathology Verification): | Adenocarcinoma of colon, metastatic |
| Normal: | 0% |
| Lesional: | 0% |
| Tumor: | 24% |
| Tumor Hypo/Acellular Stroma: | 55% |
| Tumor Hypercellular Stroma: | 20% |
| Necrosis: | 1% |
| Pathology Verification notes from H&E review: | tumor stroma: desmoplasia, with extensive hypocellular fibrosis |
| CASE Diagnosis (from medical center path report): | Adenocarcinoma of colon, metastatic |
| Age: | 60 |
| Gender: | Female |
| Tumor Grade: | AJCC G2: Moderately differentiated |

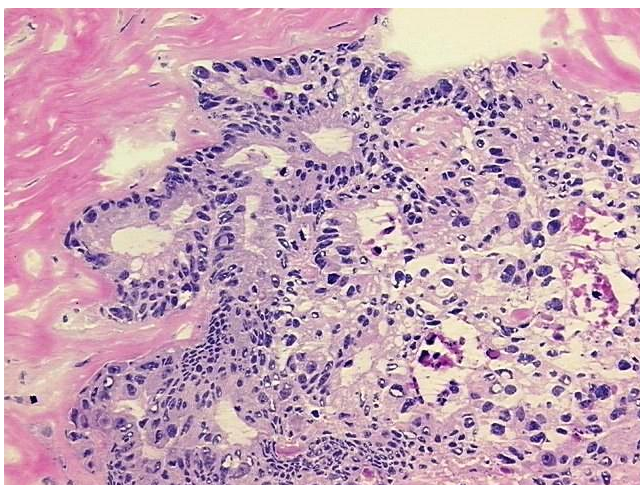


[View online »](#)

| | |
|------------------------------|---|
| Minimum Stage Grouping: | IV |
| T (Extent of Primary Tumor): | pTX |
| N (Lymph node metastasis): | pNX |
| M (Distant metastasis): | pM1 |
| Storage: | Store frozen tissue blocks at -80°C. |
| Stability: | Frozen tissue blocks are stable for at least one year from date of shipping when stored at -80°C. |

Product images:

4x Image



20x Image