

Product datasheet for **CB510629**

Frozen Tissue Blocks, Stomach

Product data:

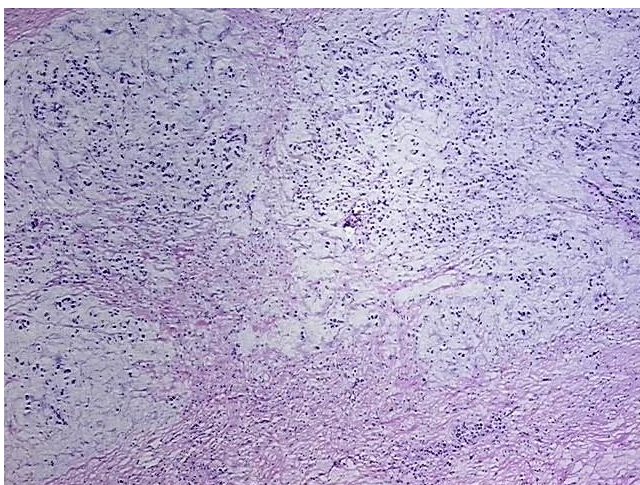
Product Type:	Frozen Blocks
Disease State:	Cancer
Diagnosis Category:	Stomach Cancer
Tissue:	Stomach
Frozen Sample ID:	FR65EE0B65
Case ID:	CI0000006531
Tissue of Origin:	Stomach
Site of Finding:	Stomach
Appearance:	Tumor
Sample Diagnosis (from Pathology Verification):	Adenocarcinoma of stomach, signet ring cell
Normal:	0%
Lesional:	0%
Tumor:	30%
Tumor Hypo/Acellular Stroma:	70%
Tumor Hypercellular Stroma:	0%
Necrosis:	0%
Pathology Verification notes from H&E review:	Tumor Stroma (Hypo/Acellular): Fibrosis, Mucin; Inflammation: Mild Lymphoplasmacytic infiltrate
CASE Diagnosis (from medical center path report):	Adenocarcinoma of stomach, signet ring cell
Age:	55
Gender:	Male
Tumor Grade:	AJCC G3: Poorly differentiated



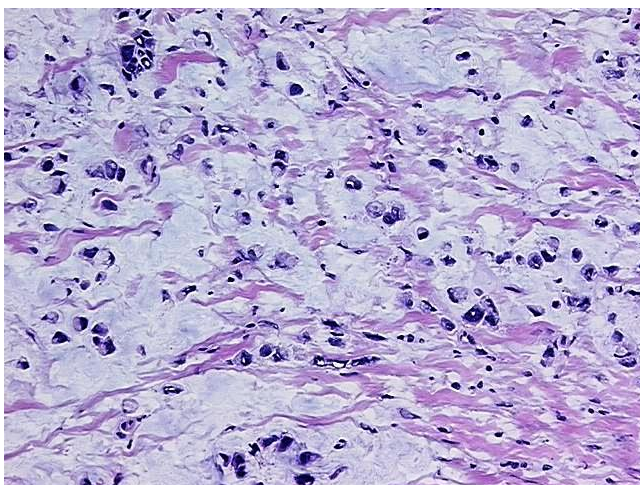
[View online »](#)

Minimum Stage Grouping:	IIIB
T (Extent of Primary Tumor):	pT3
N (Lymph node metastasis):	pN2
M (Distant metastasis):	pMX
Storage:	Store frozen tissue blocks at -80°C.
Stability:	Frozen tissue blocks are stable for at least one year from date of shipping when stored at -80°C.

Product images:



4x Image



20x Image