

## Product datasheet for **CB509581**

### Frozen Tissue Blocks, Endometrium

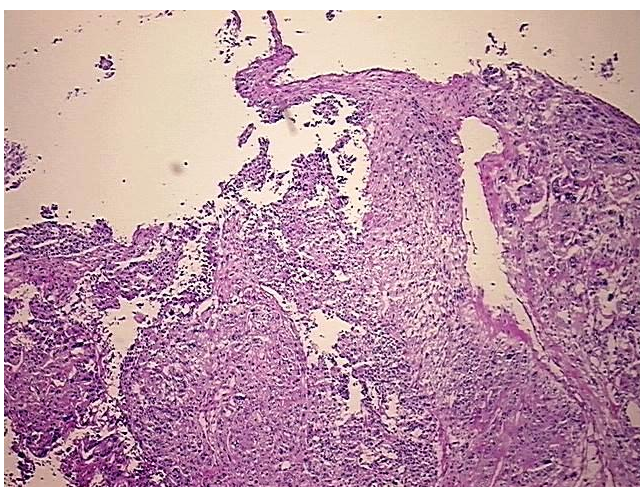
#### Product data:

Product Type:	Frozen Blocks
Disease State:	Cancer
Diagnosis Category:	Endometrial Cancer
Tissue:	Endometrium
Frozen Sample ID:	FR0001C40E
Case ID:	CI0000006089
Tissue of Origin:	Endometrium
Site of Finding:	Uterus
Appearance:	Tumor
Sample Diagnosis (from Pathology Verification):	Carcinoma of endometrium
Normal:	0%
Lesional:	0%
Tumor:	90%
Tumor Hypo/Acellular Stroma:	0%
Tumor Hypercellular Stroma:	5%
Necrosis:	5%
Pathology Verification notes from H&E review:	undifferentiated
CASE Diagnosis (from medical center path report):	Carcinoma of endometrium
Age:	85
Gender:	Female
Tumor Grade:	AJCC G4: Undifferentiated

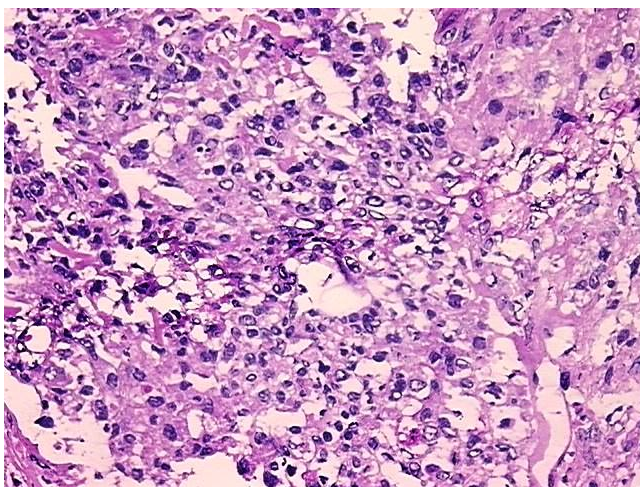


[View online »](#)

Minimum Stage Grouping:	IB
T (Extent of Primary Tumor):	pT1b
N (Lymph node metastasis):	pNX
M (Distant metastasis):	pMX
Storage:	Store frozen tissue blocks at -80°C.
Stability:	Frozen tissue blocks are stable for at least one year from date of shipping when stored at -80°C.

**Product images:**

4x Image



20x Image