

## Product datasheet for **CB508794**

### Frozen Tissue Blocks, Lung

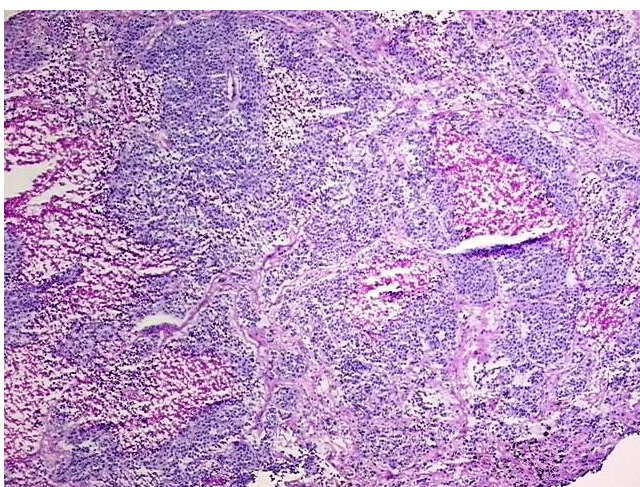
#### Product data:

Product Type:	Frozen Blocks
Disease State:	Cancer
Diagnosis Category:	Lung Cancer
Tissue:	Lung
Frozen Sample ID:	FR5B338A42
Case ID:	CI0000005971
Tissue of Origin:	Lung
Site of Finding:	Lymph node
Appearance:	Tumor
Sample Diagnosis (from Pathology Verification):	Carcinoma of lung, squamous cell, metastatic
Normal:	0%
Lesional:	0%
Tumor:	70%
Tumor Hypo/Acellular Stroma:	10%
Tumor Hypercellular Stroma:	0%
Necrosis:	20%
Pathology Verification notes from H&E review:	hypo/acellular stroma: 100% fibrosis
CASE Diagnosis (from medical center path report):	Carcinoma of lung, squamous cell, metastatic
Age:	74
Gender:	Male
Tumor Grade:	Not Reported

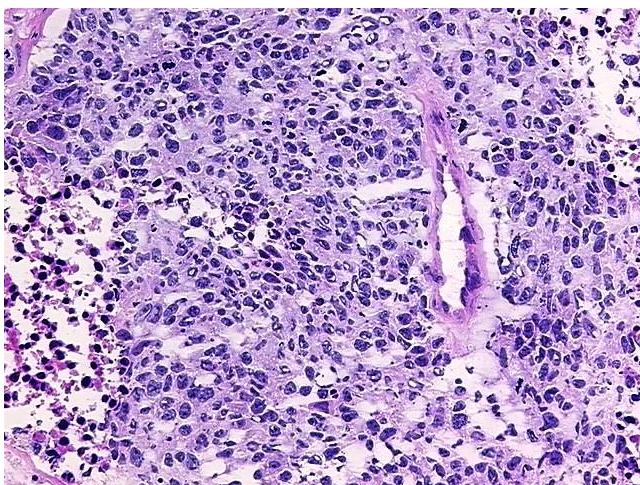


[View online »](#)

Minimum Stage Grouping:	IIA
T (Extent of Primary Tumor):	pTX
N (Lymph node metastasis):	pN1
M (Distant metastasis):	pMX
Storage:	Store frozen tissue blocks at -80°C.
Stability:	Frozen tissue blocks are stable for at least one year from date of shipping when stored at -80°C.

**Product images:**

4x Image



20x Image