

## Product datasheet for **CB508793**

### Frozen Tissue Blocks, Lung

#### Product data:

Product Type:	Frozen Blocks
Disease State:	Cancer
Diagnosis Category:	Lung Cancer
Tissue:	Lung
Frozen Sample ID:	FR0001A876
Case ID:	CI0000005971
Tissue of Origin:	Lung
Site of Finding:	Lymph node
Appearance:	Tumor
Sample Diagnosis (from Pathology Verification):	Carcinoma of lung, squamous cell, metastatic
Normal:	0%
Lesional:	0%
Tumor:	80%
Tumor Hypo/Acellular Stroma:	10%
Tumor Hypercellular Stroma:	0%
Necrosis:	10%
CASE Diagnosis (from medical center path report):	Carcinoma of lung, squamous cell, metastatic
Age:	74
Gender:	Male
Tumor Grade:	Not Reported
Minimum Stage Grouping:	IIA



[View online »](#)

T (Extent of Primary Tumor): pTX

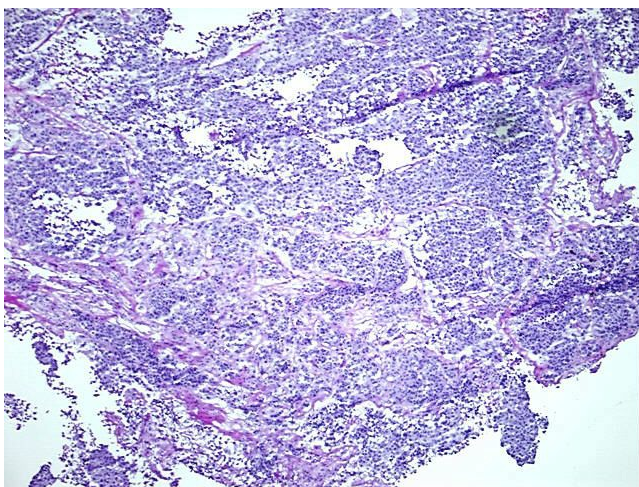
N (Lymph node metastasis): pN1

M (Distant metastasis): pMX

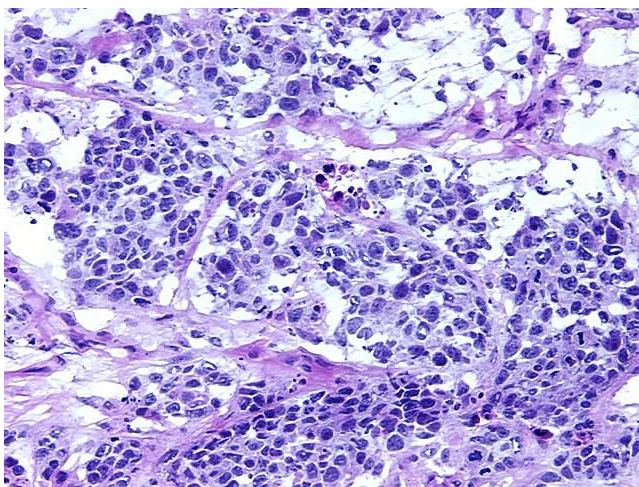
Storage: Store frozen tissue blocks at -80°C.

Stability: Frozen tissue blocks are stable for at least one year from date of shipping when stored at -80°C.

### Product images:



4x Image



20x Image