

## Product datasheet for **CB507157**

### Frozen Tissue Blocks, Lung

#### Product data:

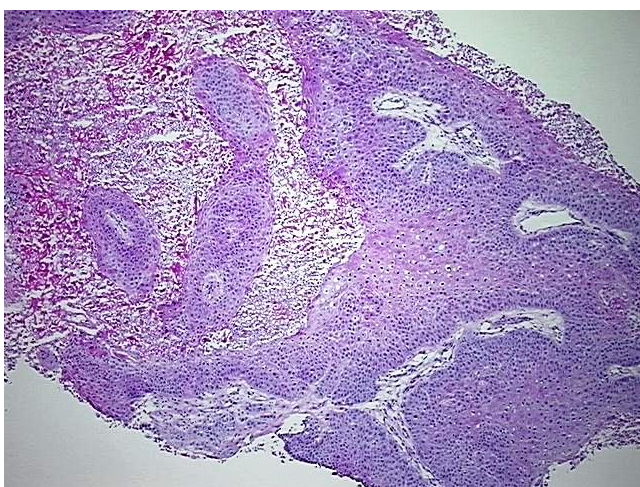
Product Type:	Frozen Blocks
Disease State:	Cancer
Diagnosis Category:	Lung Cancer
Tissue:	Lung
Frozen Sample ID:	FR00019CDD
Case ID:	CI0000005640
Tissue of Origin:	Lung
Site of Finding:	Chest wall
Appearance:	Tumor
Sample Diagnosis (from Pathology Verification):	Carcinoma of lung, squamous cell
Normal:	0%
Lesional:	0%
Tumor:	20%
Tumor Hypo/Acellular Stroma:	0%
Tumor Hypercellular Stroma:	60%
Necrosis:	20%
Pathology Verification notes from H&E review:	Tumor Stroma (Cellular): Fibroblastic cells; Other Features/Comments: tumor invading chest wall by direct extension
CASE Diagnosis (from medical center path report):	Carcinoma of lung, squamous cell
Age:	44
Gender:	Male
Tumor Grade:	AJCC G2: Moderately differentiated



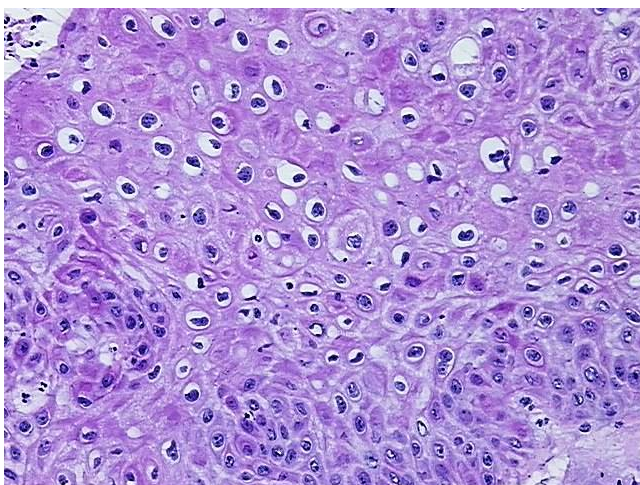
[View online »](#)

Minimum Stage Grouping:	IIB
T (Extent of Primary Tumor):	pT3
N (Lymph node metastasis):	pN0
M (Distant metastasis):	pMX
Storage:	Store frozen tissue blocks at -80°C.
Stability:	Frozen tissue blocks are stable for at least one year from date of shipping when stored at -80°C.

### Product images:



4x Image



20x Image