

Product datasheet for **CB505633**

Frozen Tissue Blocks, Ovary: right

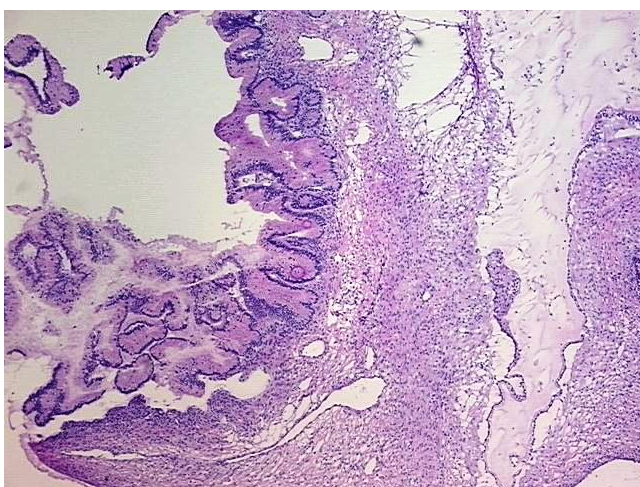
Product data:

| | |
|---|--------------------------------------|
| Product Type: | Frozen Blocks |
| Disease State: | Other Disease |
| Diagnosis Category: | Borderline Ovarian Tumor |
| Tissue: | Ovary |
| Frozen Sample ID: | FR00018812 |
| Case ID: | CI0000005388 |
| Tissue of Origin: | Ovary: right |
| Site of Finding: | Ovary: right |
| Appearance: | Tumor |
| Sample Diagnosis (from Pathology Verification): | Tumor of ovary, mucinous, borderline |
| Normal: | 15% |
| Lesional: | 0% |
| Tumor: | 40% |
| Tumor Hypo/Acellular Stroma: | 25% |
| Tumor Hypercellular Stroma: | 20% |
| Necrosis: | 0% |
| Pathology Verification notes from H&E review: | stroma: 20% desmoplasia, 25% mucin |
| CASE Diagnosis (from medical center path report): | Tumor of ovary, mucinous, borderline |
| Age: | 44 |
| Gender: | Female |
| Tumor Grade: | AJCC GB: Borderline malignancy |

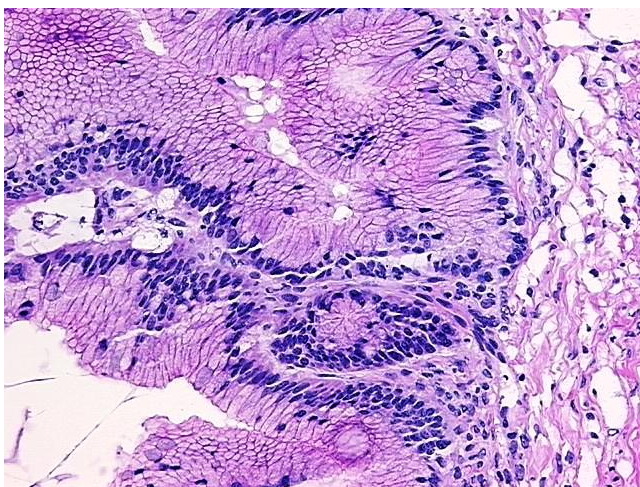


[View online »](#)

| | |
|------------------------------|---|
| Minimum Stage Grouping: | IA |
| T (Extent of Primary Tumor): | pT1a |
| N (Lymph node metastasis): | pNX |
| M (Distant metastasis): | pMX |
| Storage: | Store frozen tissue blocks at -80°C. |
| Stability: | Frozen tissue blocks are stable for at least one year from date of shipping when stored at -80°C. |

Product images:

4x Image



20x Image