

Product datasheet for **CB505253**

Frozen Tissue Blocks, Bile duct

Product data:

Product Type:	Frozen Blocks
Disease State:	Other Disease
Diagnosis Category:	Dysplasia
Tissue:	Bile duct
Frozen Sample ID:	FR5B336573
Case ID:	CI0000005274
Tissue of Origin:	Bile duct
Site of Finding:	Bile duct
Appearance:	Lesion
Sample Diagnosis (from Pathology Verification):	The common bile duct epithelial dysplasia
Normal:	40%
Lesional:	60%
Tumor:	0%
Tumor Hypo/Acellular Stroma:	0%
Tumor Hypercellular Stroma:	0%
Necrosis:	0%
Pathology Verification notes from H&E review:	lesion: 40% epithelium, 60% fibrotic wall with chronic inflammation
CASE Diagnosis (from medical center path report):	Adenocarcinoma of bile duct
Age:	67
Gender:	Female
Tumor Grade:	n/a



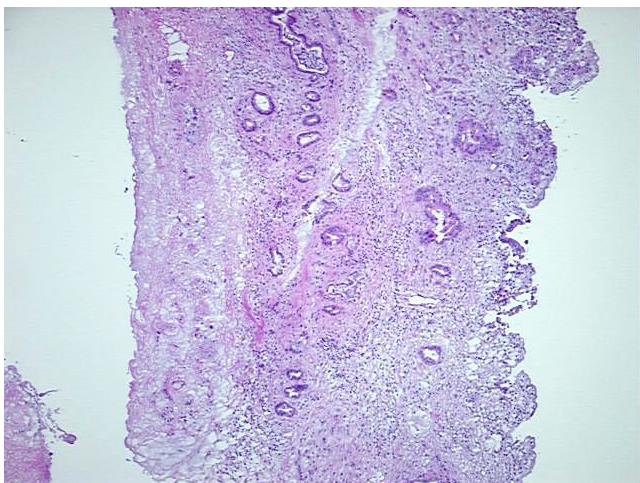
[View online »](#)

Minimum Stage
Grouping: n/a

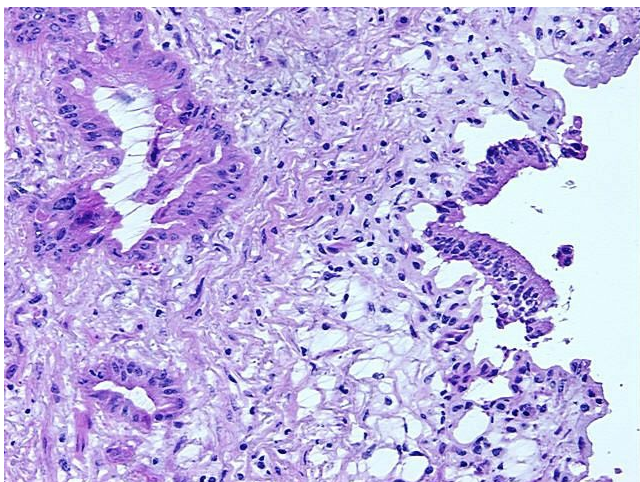
Storage: Store frozen tissue blocks at -80°C.

Stability: Frozen tissue blocks are stable for at least one year from date of shipping when stored at -80°C.

Product images:



4x Image



20x Image