

## Product datasheet for **CB505041**

### Frozen Tissue Blocks, Lung

#### Product data:

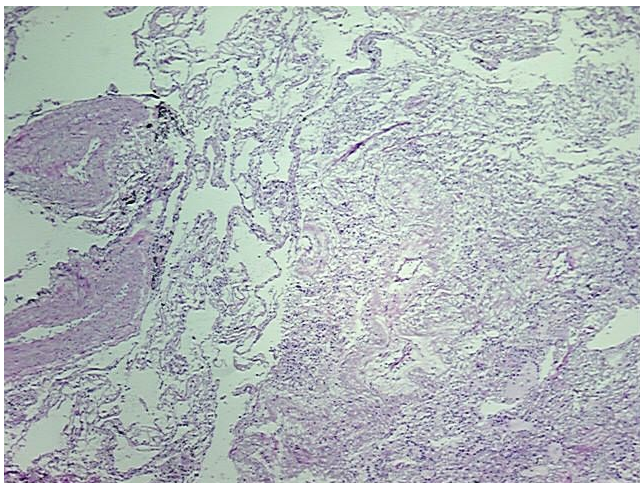
Product Type:	Frozen Blocks
Disease State:	Other Disease
Diagnosis Category:	Chronic Obstructive Pulmonary Disease (COPD)
Tissue:	Lung
Frozen Sample ID:	FR00017DC7
Case ID:	CI0000005211
Tissue of Origin:	Lung
Site of Finding:	Lung
Appearance:	Lesion
Sample Diagnosis (from Pathology Verification):	Emphysema, centrilobular
Normal:	0%
Lesional:	100%
Tumor:	0%
Tumor Hypo/Acellular Stroma:	0%
Tumor Hypercellular Stroma:	0%
Necrosis:	0%
Pathology Verification notes from H&E review:	95% alveoli, 5% bronchioles
CASE Diagnosis (from medical center path report):	Emphysema, centrilobular
Age:	62
Gender:	Male
Storage:	Store frozen tissue blocks at -80°C.



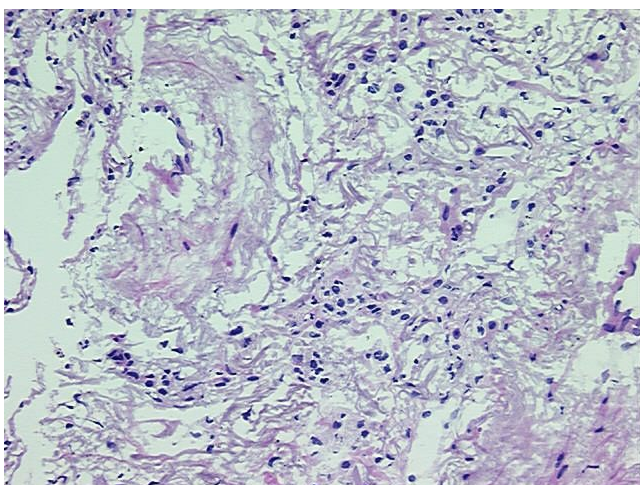
[View online »](#)

**Stability:** Frozen tissue blocks are stable for at least one year from date of shipping when stored at -80°C.

**Product images:**



4x Image



20x Image