

Product datasheet for **CB504976**

Frozen Tissue Blocks, Lung: left lower lobe

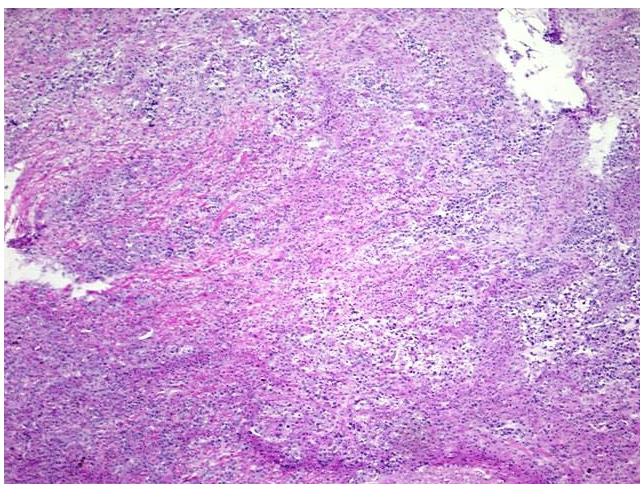
Product data:

Product Type:	Frozen Blocks
Disease State:	Cancer
Diagnosis Category:	Lung Cancer
Tissue:	Lung
Frozen Sample ID:	FR00017A63
Case ID:	CI0000005203
Tissue of Origin:	Lung: left lower lobe
Site of Finding:	Lung: left lower lobe
Appearance:	Tumor
Sample Diagnosis (from Pathology Verification):	Carcinoma of lung, non-small cell
Normal:	0%
Lesional:	0%
Tumor:	45%
Tumor Hypo/Acellular Stroma:	10%
Tumor Hypercellular Stroma:	45%
Necrosis:	0%
Pathology Verification notes from H&E review:	The histologic features of this neoplasm include areas of moderate to poorly differentiated squamous cell carcinoma and adenocarcinoma, and areas with a lepidic growth pattern of bronchiolo-alveolar carcinoma
CASE Diagnosis (from medical center path report):	Carcinoma of lung, non-small cell
Age:	70
Gender:	Female

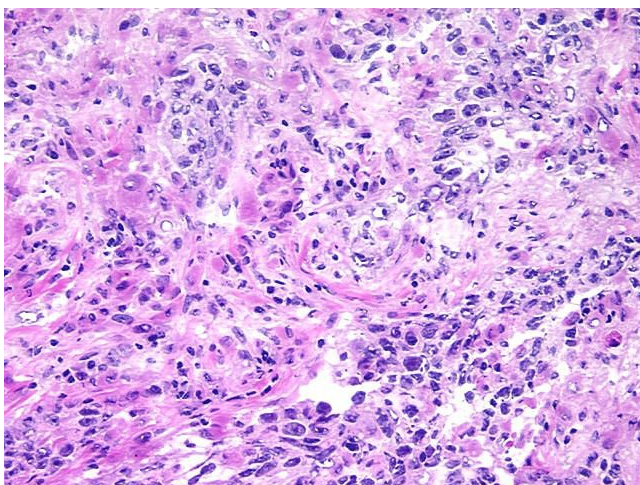


[View online »](#)

Tumor Grade:	AJCC G3: Poorly differentiated
Minimum Stage Grouping:	IIIA
T (Extent of Primary Tumor):	pT2
N (Lymph node metastasis):	pN2
M (Distant metastasis):	pMX
Storage:	Store frozen tissue blocks at -80°C.
Stability:	Frozen tissue blocks are stable for at least one year from date of shipping when stored at -80°C.

Product images:

4x Image



20x Image