

Product datasheet for **CB503208**

Frozen Tissue Blocks, Endometrium

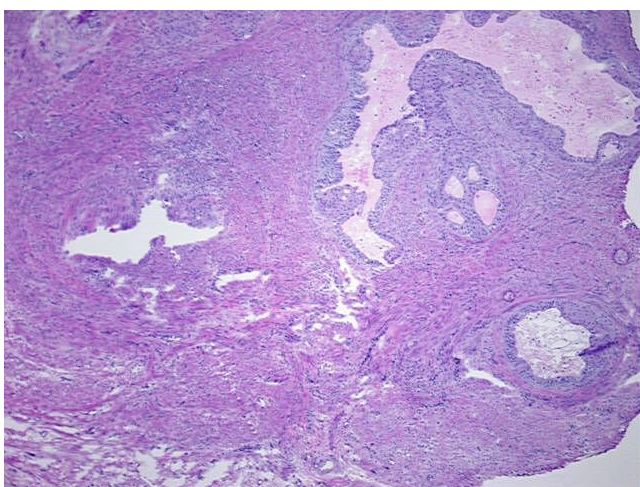
Product data:

Product Type:	Frozen Blocks
Disease State:	Cancer
Diagnosis Category:	Endometrial Cancer
Tissue:	Endometrium
Frozen Sample ID:	FR000072AC
Case ID:	CI0000000394
Tissue of Origin:	Endometrium
Site of Finding:	Uterus
Appearance:	Tumor
Sample Diagnosis (from Pathology Verification):	Adenocarcinoma of endometrium, endometrioid
Normal:	80%
Lesional:	0%
Tumor:	19%
Tumor Hypo/Acellular Stroma:	0%
Tumor Hypercellular Stroma:	1%
Necrosis:	0%
Pathology Verification notes from H&E review:	Tumor: with squamous and mucinous differentiation; Other Features/Comments: Normal: 80% myometrium, infiltrated by tumor
CASE Diagnosis (from medical center path report):	Adenocarcinoma of endometrium, endometrioid
Age:	65
Gender:	Female
Tumor Grade:	FIGO G2: Moderately differentiated

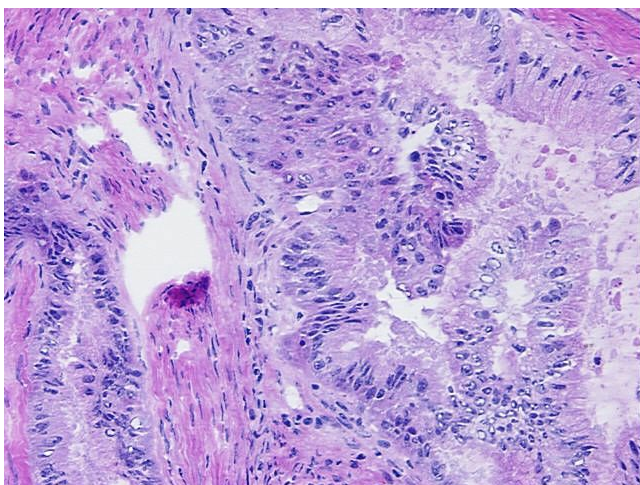


[View online »](#)

Minimum Stage Grouping:	IVB
T (Extent of Primary Tumor):	pT3a
N (Lymph node metastasis):	pNX
M (Distant metastasis):	pM1
Storage:	Store frozen tissue blocks at -80°C.
Stability:	Frozen tissue blocks are stable for at least one year from date of shipping when stored at -80°C.

Product images:

4x Image



20x Image