

## Product datasheet for **CB502784**

### Frozen Tissue Blocks, Stomach

#### Product data:

|   |   |
|---|---|
| Product Type:                                     | Frozen Blocks   |
| Disease State:                                    | Other Disease   |
| Diagnosis Category:                               | Gastritis   |
| Tissue:   | Stomach   |
| Frozen Sample ID:                                 | FR00006A16  |
| Case ID:  | CI0000000343  |
| Tissue of Origin:                                 | Stomach   |
| Site of Finding:                                  | Stomach   |
| Appearance:                                       | Lesion  |
| Sample Diagnosis (from Pathology Verification):   | Gastritis, chronic  |
| Normal:   | 0%  |
| Lesional:   | 100%  |
| Tumor:  | 0%  |
| Tumor Hypo/Acellular Stroma:                      | 0%  |
| Tumor Hypercellular Stroma:                       | 0%  |
| Necrosis:   | 0%  |
| Pathology Verification notes from H&E review:     | 20% Mucosa, 80% Submucosa and Muscle; Contains lymphocytic infiltrate consistent with chronic gastritis |
| CASE Diagnosis (from medical center path report): | Adenocarcinoma of stomach, signet ring cell   |
| Age:  | 51  |
| Gender:   | Male  |
| Tumor Grade:                                      | n/a   |



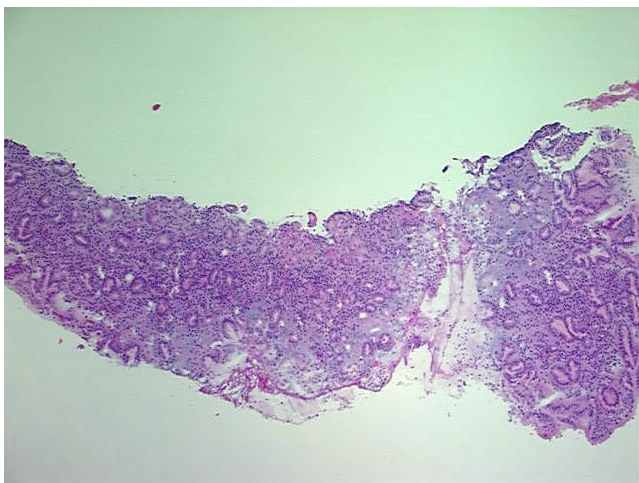
[View online »](#)

Minimum Stage  
Grouping: n/a

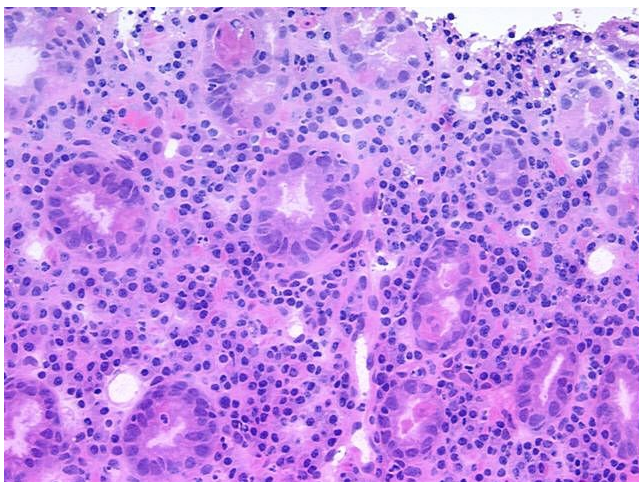
Storage: Store frozen tissue blocks at -80°C.

Stability: Frozen tissue blocks are stable for at least one year from date of shipping when stored at -80°C.

### Product images:



4x Image



20x Image