

Product datasheet for **CB502450**

Frozen Tissue Blocks, Lung

Product data:

Product Type:	Frozen Blocks
Disease State:	Cancer
Diagnosis Category:	Lung Cancer
Tissue:	Lung
Frozen Sample ID:	FR000064E7
Case ID:	CI0000000305
Tissue of Origin:	Lung
Site of Finding:	Lung
Appearance:	Tumor
Sample Diagnosis (from Pathology Verification):	Carcinoma of lung, squamous cell
Normal:	0%
Lesional:	0%
Tumor:	20%
Tumor Hypo/Acellular Stroma:	0%
Tumor Hypercellular Stroma:	5%
Necrosis:	75%
CASE Diagnosis (from medical center path report):	Carcinoma of lung, squamous cell
Age:	76
Gender:	Male
Tumor Grade:	AJCC G2: Moderately differentiated
Minimum Stage Grouping:	IIIA



[View online »](#)

T (Extent of Primary Tumor): pT3

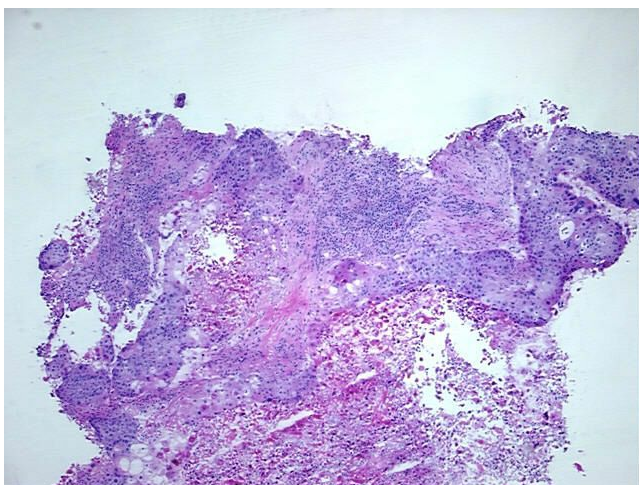
N (Lymph node metastasis): pN1

M (Distant metastasis): pMX

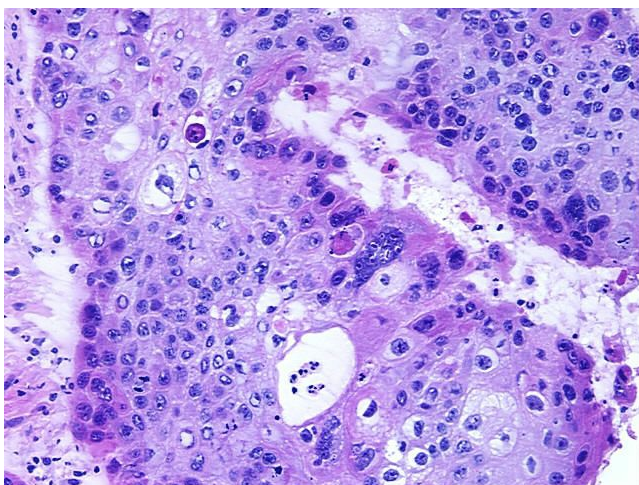
Storage: Store frozen tissue blocks at -80°C.

Stability: Frozen tissue blocks are stable for at least one year from date of shipping when stored at -80°C.

Product images:



4x Image



20x Image