

Product datasheet for **CB501639**

Frozen Tissue Blocks, Bone

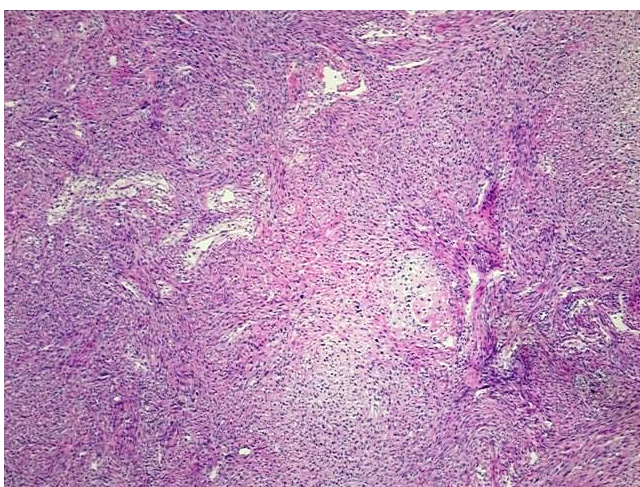
Product data:

| | |
|---------------------------------------------------|-----------------------------------------------------------------|
| Product Type: | Frozen Blocks |
| Disease State: | Cancer |
| Diagnosis Category: | Sarcoma |
| Tissue: | Bone |
| Frozen Sample ID: | FR000056A5 |
| Case ID: | CI0000000214 |
| Tissue of Origin: | Bone |
| Site of Finding: | Lung |
| Appearance: | Tumor |
| Sample Diagnosis (from Pathology Verification): | Osteosarcoma, metastatic |
| Normal: | 5% |
| Lesional: | 0% |
| Tumor: | 90% |
| Tumor Hypo/Acellular Stroma: | 5% |
| Tumor Hypercellular Stroma: | 0% |
| Necrosis: | 0% |
| Pathology Verification notes from H&E review: | Lung with metastatic osteosarcoma; cartilage and bone producing |
| CASE Diagnosis (from medical center path report): | Osteosarcoma, metastatic |
| Age: | 57 |
| Gender: | Female |
| Tumor Grade: | Not Reported |

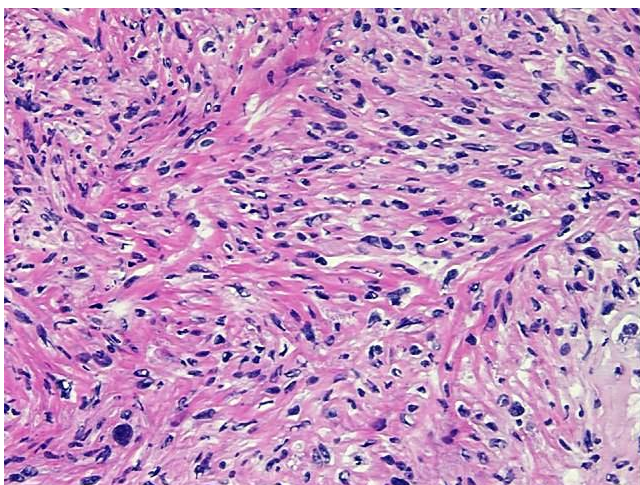


[View online »](#)

| | |
|------------------------------|---------------------------------------------------------------------------------------------------|
| Minimum Stage Grouping: | IVA |
| T (Extent of Primary Tumor): | pTX |
| N (Lymph node metastasis): | pNX |
| M (Distant metastasis): | pM1a |
| Storage: | Store frozen tissue blocks at -80°C. |
| Stability: | Frozen tissue blocks are stable for at least one year from date of shipping when stored at -80°C. |

Product images:

4x Image



20x Image