

Product datasheet for **CB501325**

Frozen Tissue Blocks, Pancreas

Product data:

Product Type:	Frozen Blocks
Disease State:	Cancer
Diagnosis Category:	Pancreatic Cancer
Tissue:	Pancreas
Frozen Sample ID:	FR00004745
Case ID:	CI0000000171
Tissue of Origin:	Pancreas
Site of Finding:	Pancreas
Appearance:	Tumor
Sample Diagnosis (from Pathology Verification):	Adenocarcinoma, consistent with pancreas or biliary primary
Normal:	30%
Lesional:	0%
Tumor:	40%
Tumor Hypo/Acellular Stroma:	20%
Tumor Hypercellular Stroma:	10%
Necrosis:	0%
Pathology Verification notes from H&E review:	Non Tumor Structures: 80% Adipose tissue, 20% Nerves
CASE Diagnosis (from medical center path report):	Adenocarcinoma, consistent with pancreas or biliary primary
Age:	67
Gender:	Female
Tumor Grade:	AJCC G2: Moderately differentiated



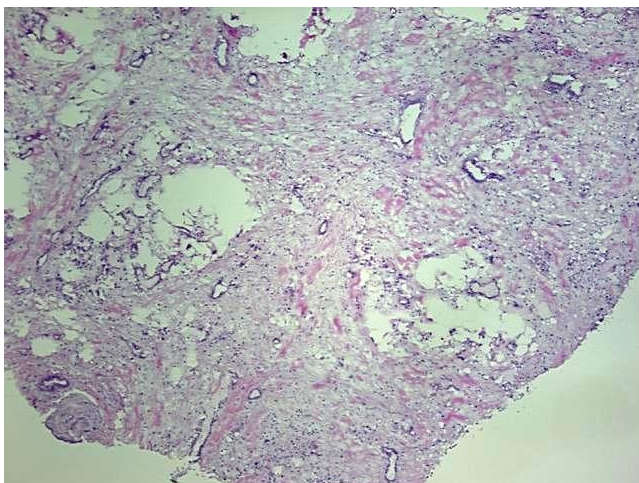
[View online »](#)

Minimum Stage Grouping: Not Reported

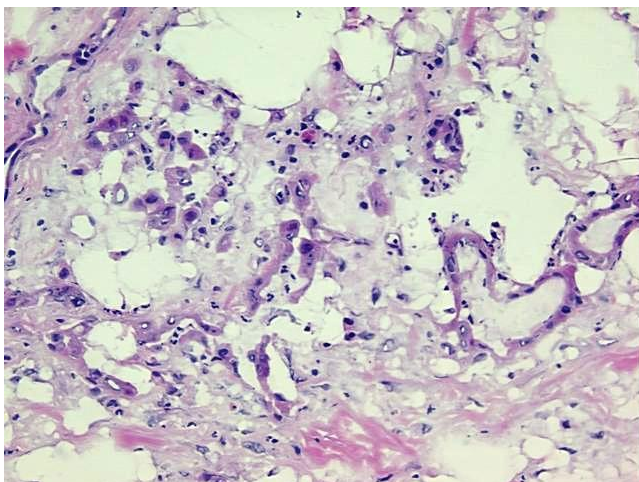
Storage: Store frozen tissue blocks at -80°C.

Stability: Frozen tissue blocks are stable for at least one year from date of shipping when stored at -80°C.

Product images:



4x Image



20x Image