

Product datasheet for **CB501233**

Frozen Tissue Blocks, Endometrium

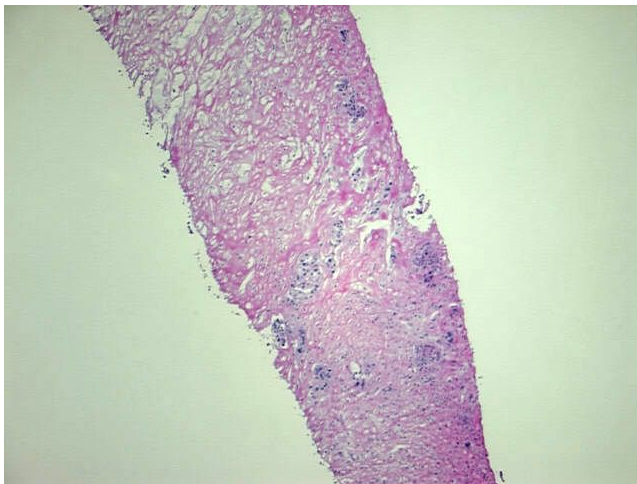
Product data:

Product Type:	Frozen Blocks
Disease State:	Cancer
Diagnosis Category:	Endometrial Cancer
Tissue:	Endometrium
Frozen Sample ID:	FR00004427
Case ID:	CI0000000149
Tissue of Origin:	Endometrium
Site of Finding:	Ovary: left
Appearance:	Tumor
Sample Diagnosis (from Pathology Verification):	Adenocarcinoma of endometrium, metastatic
Normal:	80%
Lesional:	0%
Tumor:	20%
Tumor Hypo/Acellular Stroma:	0%
Tumor Hypercellular Stroma:	0%
Necrosis:	0%
Pathology Verification notes from H&E review:	Poorly differentiated squamoid tumor present; Likely metastatic from endometrial primary
CASE Diagnosis (from medical center path report):	Carcinoma of endometrium, glandular and squamous features
Age:	70
Gender:	Female
Tumor Grade:	FIGO G3: Poorly differentiated

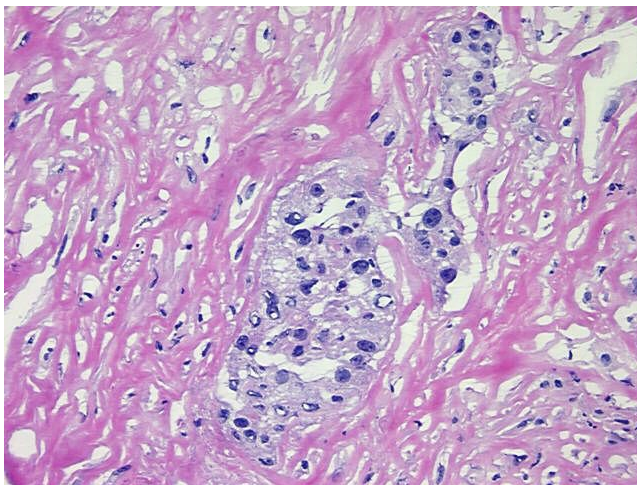


[View online »](#)

Minimum Stage Grouping:	IIIA
T (Extent of Primary Tumor):	pT3a
N (Lymph node metastasis):	pNX
M (Distant metastasis):	pMX
Storage:	Store frozen tissue blocks at -80°C.
Stability:	Frozen tissue blocks are stable for at least one year from date of shipping when stored at -80°C.

Product images:

4x Image



20x Image