

Product datasheet for **CB501229**

Frozen Tissue Blocks, Endometrium

Product data:

Product Type:	Frozen Blocks
Disease State:	Cancer
Diagnosis Category:	Endometrial Cancer
Tissue:	Endometrium
Frozen Sample ID:	FR00004422
Case ID:	CI0000000149
Tissue of Origin:	Endometrium
Site of Finding:	Ovary: left
Appearance:	Tumor
Sample Diagnosis (from Pathology Verification):	Carcinoma of endometrium, glandular and squamous features, metastatic
Normal:	65%
Lesional:	0%
Tumor:	25%
Tumor Hypo/Acellular Stroma:	0%
Tumor Hypercellular Stroma:	0%
Necrosis:	10%
CASE Diagnosis (from medical center path report):	Carcinoma of endometrium, glandular and squamous features
Age:	70
Gender:	Female
Tumor Grade:	FIGO G3: Poorly differentiated
Minimum Stage Grouping:	IIIA



[View online »](#)

T (Extent of Primary Tumor): pT3a

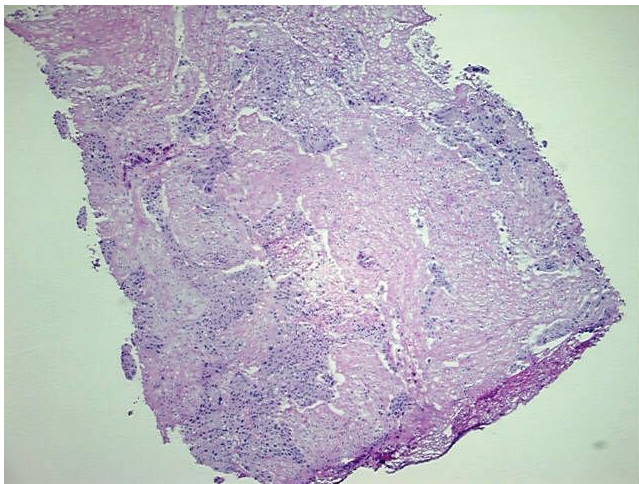
N (Lymph node metastasis): pNX

M (Distant metastasis): pMX

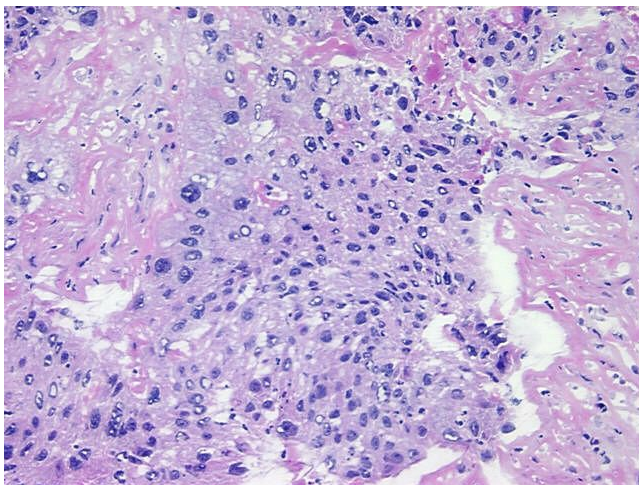
Storage: Store frozen tissue blocks at -80°C.

Stability: Frozen tissue blocks are stable for at least one year from date of shipping when stored at -80°C.

Product images:



4x Image



20x Image