

Product datasheet for **BP8007S**

Collagen I (COL1A1) Rabbit Polyclonal Antibody

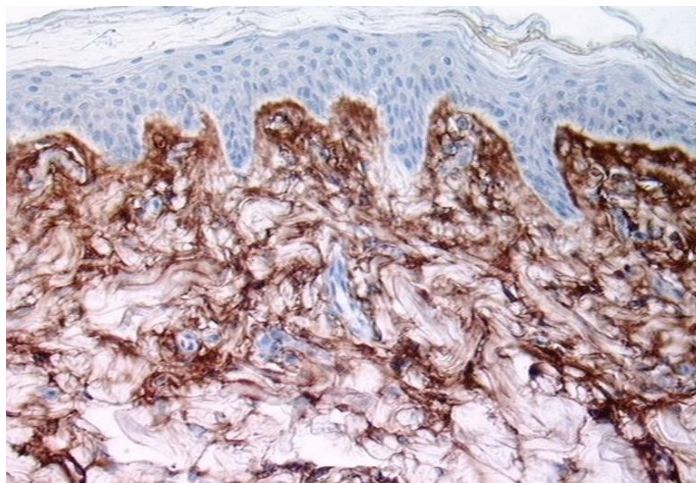
Product data:

Product Type:	Primary Antibodies
Applications:	ELISA, IF, IHC, R
Recommended Dilution:	RIA. ELISA: $\geq 1/200$ shows OD ≥ 500 . Immunofluorescence: 1/80 (1/500 immunoperoxidase ABC or labelled polymer-technic). Immunohistochemistry on Frozen and Paraffin Embedded Sections: $\geq 1/500$. Incubation Time: 60 min at RT or 2-8°C over night. Positive Control: Porcine skin and tendon. Pretreatment: After de-waxing the tissue slices they are treated with 0.2% hyaluronidase (app. 300 U/mg) in TBS 15 min at 37°C. There after non-specific binding is blocked by blocking serum or 3% BSA in TBS. For peroxidase systems blocking with 1% peroxide solution in TBS for 30 min at RT is recommended.
Reactivity:	Porcine
Host:	Rabbit
Clonality:	Polyclonal
Immunogen:	Purified Collagen type I from Porcine tendon.
Specificity:	This antibody is specific to Porcine Collagen type I. Cross reactivity: Collagen type III: < 1% Collagen type II, IV, V: < 0.1% Elastin: < 0.1% Fibronectin < 0.1% Cross reactivity with Rat and Bovine < 1%, Human and Mouse < 0.1%.
Formulation:	PBS without BSA or preservatives State: Purified State: Lyophilized purified Ig fraction
Reconstitution Method:	Restore with 0.1 ml distilled water, for further dilution use appropriate antibody diluent.
Concentration:	lot specific
Purification:	Affinity Chromatography
Conjugation:	Unconjugated



[View online »](#)

Storage:	Store lyophilized at 2-8°C for 6 months or at -20°C long term. After reconstitution store the antibody undiluted at 2-8°C for one month or (in aliquots) at -20°C long term. Avoid repeated freezing and thawing.
Stability:	Shelf life: one year from despatch.
Gene Name:	collagen type I alpha 1
Database Link:	Entrez Gene 1277 Human P02452
Background:	Collagens consist in a family of highly specialized glycoproteins of which at least 16 genetically distinct types are known to date. The basal unit of a collagen molecule consists in a triple-helical structure formed by 3 alpha-chains. Predominant amino acids are glycine, proline and hydroxyproline. Regularly also lysines and hydroxylysines occur, which are responsible for crosslinkage and glycosylation of the protein chains. Different composition of alpha-chains and different glycosylation contribute to the high variability of collagens in different tissues and organs. Type I collagen (95 kDa) is found in bone, cornea, skin and tendon.
Synonyms:	COL1A1, COL1A2, Alpha-1 type I collagen, Alpha-2 type I collagen
Protein Families:	Druggable Genome
Protein Pathways:	ECM-receptor interaction, Focal adhesion

Product images:

Collagen Type I on porcine skin paraffin section.
CO20191, DAB, hematoxylin