

## Product datasheet for **BP702**

### Orexin (HCRT) (2-14) Sheep Polyclonal Antibody

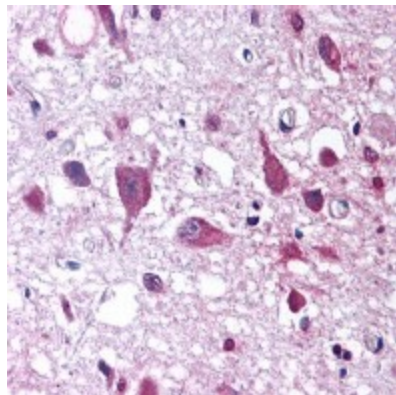
#### Product data:

Product Type:	Primary Antibodies
Applications:	ELISA, IHC
Recommended Dilution:	Immunohistochemistry on frozen sections. Immunohistochemistry on paraffin sections (5 - 10 µg/ml). ELISA (1:20 - 1:100). Use Hypothalamus as positive control.
Reactivity:	Human
Host:	Sheep
Clonality:	Polyclonal
Immunogen:	Synthetic peptide corresponding to amino acids 2-14 of human orexin A peptide, conjugated to KLH.
Specificity:	This antibody detects Orexin A.
Formulation:	Phosphate buffered saline, pH 7.2, containing 0.09 % Sodium Azide (NaN <sub>3</sub> ) State: Purified State: Liquid Ig fraction
Concentration:	lot specific
Purification:	Affinity Chromatography
Conjugation:	Unconjugated
Storage:	Store the antibody at -20 °C. Can be shipped at 2 - 8 °C. Avoid repeated freezing and thawing.
Stability:	Shelf life: One year from despatch.
Gene Name:	hypocretin (orexin) neuropeptide precursor
Database Link:	<a href="#">Entrez Gene 3060 Human O43612</a>
Synonyms:	HCRT, OX, PPORX, PPOX, Hypocretin



[View online »](#)

**Product images:**



Staining of paraffin embedded human hypothalamus with sheep anti human Orexin A.