

Product datasheet for **BP5026**

Cingulin (CGN) Guinea Pig Polyclonal Antibody

Product data:

Product Type:	Primary Antibodies
Applications:	IF, IHC, WB
Recommended Dilution:	Immunoblotting. Immunofluorescence Microscopy: 1/100. Dilute immediately with PBS before use. Immunohistochemistry on Frozen Sections On cultured cells initial fixation with formaldehyde is recommended for optimal staining. Immunohistochemistry on Paraffin Sections (Only after microwave treatment). <i>Positive Control:</i> Total cell lysate of e.g. CaCo-2 cells.
Reactivity:	Bovine, Human, Mouse, Rabbit, Xenopus
Host:	Guinea Pig
Clonality:	Polyclonal
Immunogen:	Full length GST-fusion protein of Human Cingulin
Specificity:	The antibody reacts specifically with cingulin (a ca.150 kD polypeptide) present in tight junctions (zonula occludens) of polar epithelia (e.g. colon, duodenum, kidney, liver, pancreas) of transitional epithelia (e.g. bladder epithelium) and of stratified epithelia (e.g. skin, foot sole, tongue, oesophagus, vagina). It is negative with endothelia of vessels and capillaries (e.g. in heart and brain). Tested Reactivities on Cultured Cell Lines: Carcinoma cell lines of Human (e.g. MCF-7, Caco-2, PLC, A-431), Bovine (MDBK, BMGE) and Canine (MDCK) origin.
Formulation:	State: Serum State: Liquid Stabilized Antiserum Preservative: 0.09% Sodium Azide
Conjugation:	Unconjugated
Storage:	Store the antibody undiluted at 2-8°C.
Stability:	Shelf life: one year from despatch.
Gene Name:	cingulin
Database Link:	Entrez Gene 57530 Human Q9P2M7



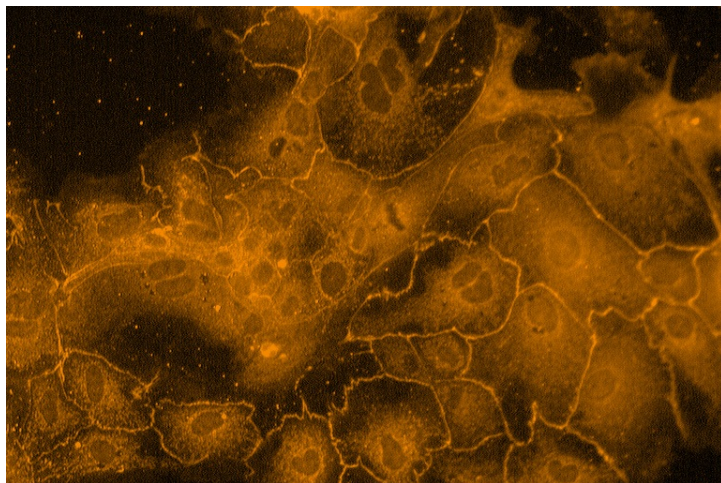
[View online »](#)

Background: Cingulin, a polypeptide of 126.5 kD (calculated from aa sequence data); apparent Mr 150 kD (after SDS-PAGE); pI 6.5 (very similar to that of symplekin, another junctional protein)

Synonyms: CGN, KIAA1319

Protein Pathways: Tight junction

Product images:



Immunofluorescence staining of Cingulin in primary epithelial cells of sheep rumen using antibody BP5026 (1/100, periodate-lysine-paraformaldehyde fixation; Courtesy of S. Bilk, TiHo Hannover, German)