

Product datasheet for **BP5007**

Cytokeratin 8 (KRT8) (+ KRT18) Guinea Pig Polyclonal Antibody

Product data:

Product Type:	Primary Antibodies
Applications:	ELISA, IHC, WB
Recommended Dilution:	ELISA. Immunoblotting: 1/2000 for Western blotting. Cytological material. Immunohistochemistry on Frozen Tissue: 1/100. Immunohistochemistry on Paraffin-Embedded Tissue: 1/50 (microwave treatment recommended). <i>Incubation Time:</i> 1 h at RT, extended with Paraffin.
Reactivity:	Bovine, Chicken, Hamster, Human, Mouse, Rat, Xenopus
Host:	Guinea Pig
Clonality:	Polyclonal
Immunogen:	Keratin K8/K18 filaments, reconstituted from purified Bovine keratins K8 and K18
Specificity:	Reactive Polypeptide: Mr 52 500 and 45 500 Keratins K8 and K18 of simple type epithelium. Tumors Specifically Detected: All adenocarcinoma tested, undifferentiated carcinoma, hepatocellular carcinoma, cervix carcinoma.
Formulation:	State: Serum State: Liquid stabilized antiserum Preservative: 0.09% Sodium Azide
Conjugation:	Unconjugated
Storage:	Store undiluted at 2-8°C for one month or (in aliquots) at -20°C for longer. Avoid repeated freezing and thawing.
Stability:	Shelf life: one year from despatch.
Gene Name:	keratin 8
Database Link:	Entrez Gene 16691 Mouse Entrez Gene 25626 Rat Entrez Gene 3856 Human P05787



[View online »](#)

Background:

Keratin 8 belongs to the type B (basic) subfamily of high molecular weight keratins and exists in combination with keratin 18. Keratin 8 is primarily found in the non-squamous epithelia and is present in majority of adenocarcinomas and ductal carcinomas. It is absent in squamous cell carcinomas. Hepatocellular carcinomas are defined by the use of antibodies that recognize only cytokeratin polypeptides 8 and 18.

Synonyms:

KRT8, CYK8, Cytokeratin-8, CK8, Keratin-8, K8, Cytokeratin endo A

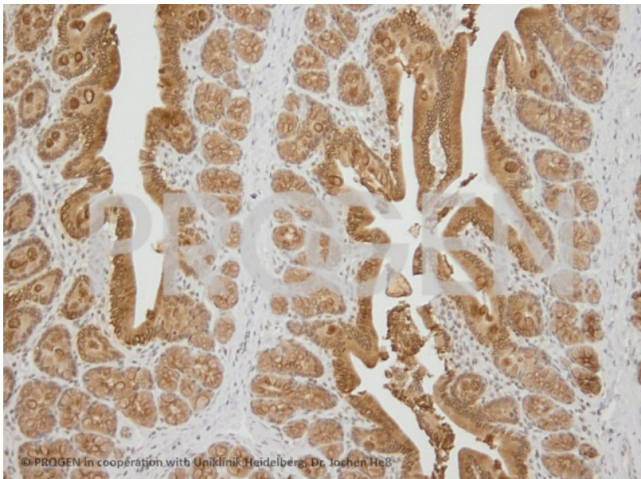
Protein Families:

Druggable Genome

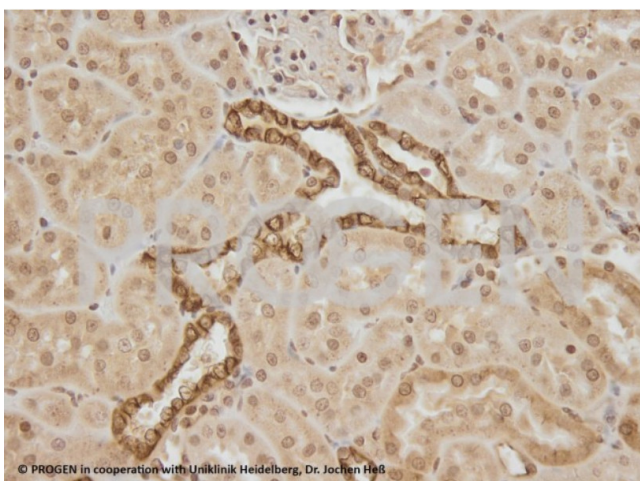
Product images:



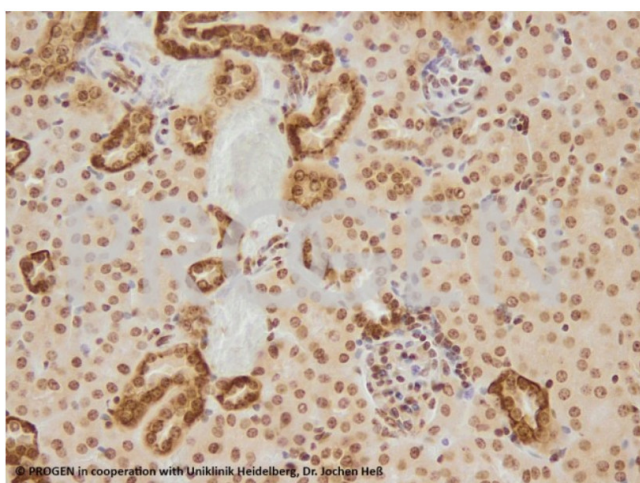
IHC staining of rat liver (courtesy of J.Heß, University Hospital Heidelberg).



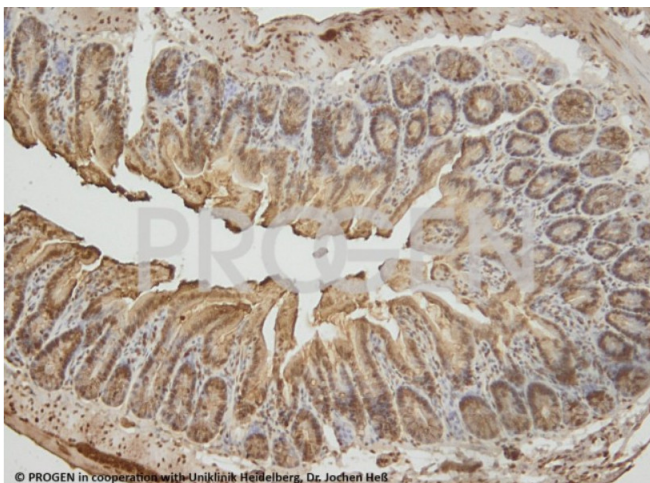
IHC staining of rat colon (courtesy of J.Heß, University Hospital Heidelberg).



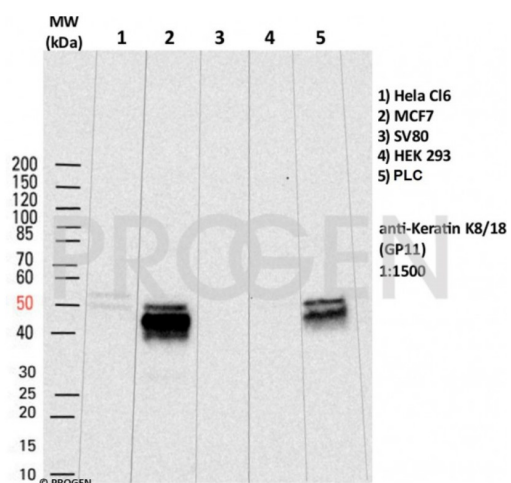
IHC staining of rat kidney (courtesy of J.Heß, University Hospital Heidelberg).



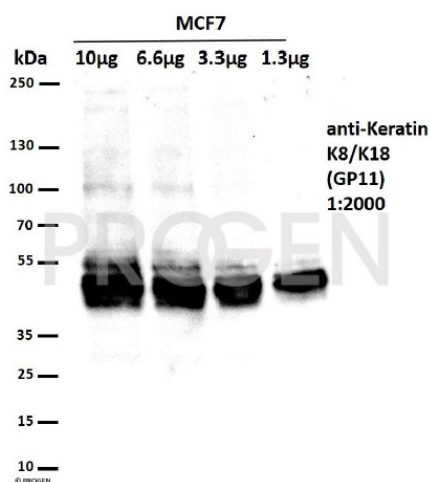
IHC staining of mouse kidney (courtesy of J.Heß, University Hospital Heidelberg).



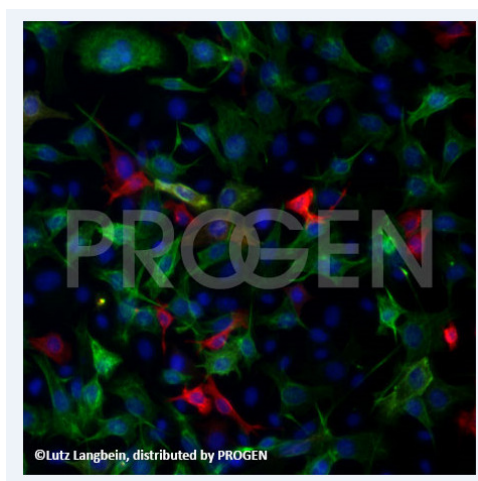
IHC staining of mouse colon (courtesy of J.Heß, University Hospital Heidelberg).



Western blot with human cell lines using anti Cytokeratin 8/18 antibody BP5007.



Western Blot using anti Cytokeratin 8/18 antibody BP5007 at 1/2000. MCF7 whole cell lysate (1.3 - 10 µg).



Immunofluorescence staining of mouse CDβGeo cells with anti-Keratin K8/18 (green), Keratin K5 (Covance, red) and Dapi (blue) (Courtesy of Karen A Dunphy, Veterinary and Animal Sciences, University of Massachusetts).