

## Product datasheet for **BP4011B**

### MRP8/14 (S100A8/A9) Chicken Polyclonal Antibody

#### Product data:

Product Type:	Primary Antibodies
Applications:	ELISA, IHC
Recommended Dilution:	<b>ELISA.</b> <b>Immunohistochemistry on Frozen Sections:</b> 1 µg/ml (1/1000). <b>Immunohistochemistry on Paraffin Sections:</b> 4 µg/ml (1/250). Proteinase K pretreatment for antigen retrieval is recommended. <b>Suggested Positive Control:</b> Human tonsil.
Reactivity:	Bovine, Human, Porcine
Host:	Chicken
Clonality:	Polyclonal
Immunogen:	Recombinant Human MRP8 and MRP14. <b>Antigen, epitope:</b> MRP8 and MRP14 and their Ca <sup>2+</sup> -dependent complex. Several epitopes.
Specificity:	This polyclonal antibody recognizes different epitopes on the MRP8/14 heterocomplex (S100A8/S100A9). Thus, the antibody does not discriminate between the individual subunits MRP8 or MRP14. In immune histochemistry, it detects early inflammatory macrophages and can thus be used for the classification of acute stage inflammation in tissue sections and in smears. The MRP8/14 specific ELISA has shown significant advantages in the early assessment of certain acute inflammatory conditions.
Formulation:	PBS, pH 7.2 Label: Biotin State: Liquid purified Ig fraction Preservative: Kathon
Concentration:	1.0 mg/ml
Purification:	Purified from egg yolk by repeated precipitation
Conjugation:	Biotin
Storage:	Store the antibody undiluted at 2-8 °C.
Stability:	Shelf life: six months from despatch.



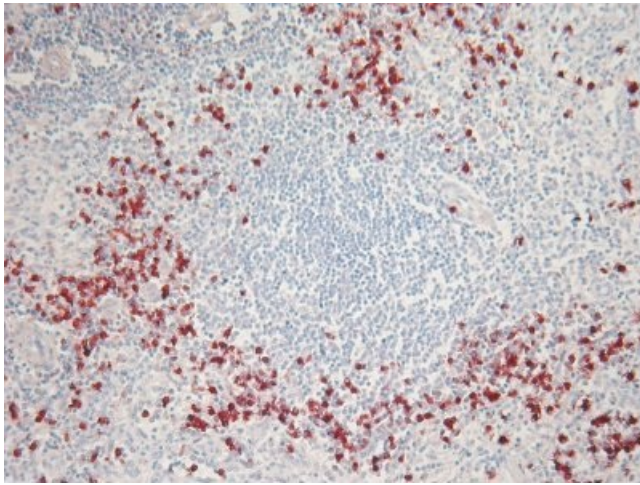
[View online »](#)

**Background:**

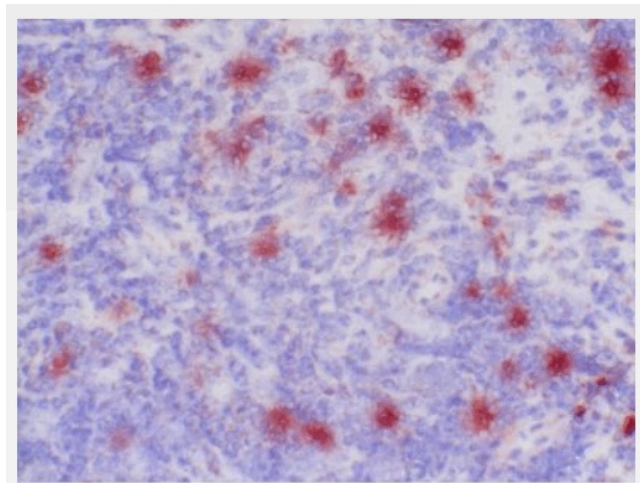
MRP8 and MRP14 are members of the S100 family of proteins containing 2 EF hand calcium binding motifs. S100 proteins are localized in the cytoplasm and/or nucleus of a wide range of cells, and involved in the regulation of a number of cellular processes such as cell cycle progression and differentiation. S100 genes include at least 13 members which are located as a cluster on chromosome 1q21

**Synonyms:**

Calgranulin A/B, Calprotectin, L1 Protein, CFAG, P8, P14, CAGA, CAGB, CFAG, MRP-8, MRP-14

**Product images:**

Immunohistochemistry on paraffin section:  
Staining of human spleen with BP4011B



Immunohistochemistry on frozen section:  
Staining of human tonsil with BP4011B