

Product datasheet for **BP4011**

MRP8/14 (S100A8/A9) Chicken Polyclonal Antibody

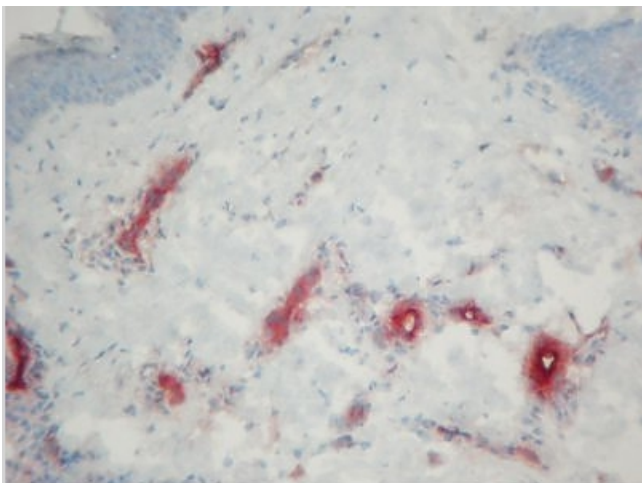
Product data:

Product Type:	Primary Antibodies
Applications:	ELISA, IHC
Recommended Dilution:	ELISA. Immunohistochemistry on Frozen Sections: 0.5 µg/ml (1/2000). Immunohistochemistry on Paraffin Sections: 4 µg/ml (1/250). Proteinase K pretreatment for antigen retrieval is recommended. <i>Recommended Positive Control:</i> Human tonsil.
Reactivity:	Bovine, Human, Porcine
Host:	Chicken
Clonality:	Polyclonal
Immunogen:	Recombinant MRP8 and MRP14
Specificity:	This polyclonal antibody recognizes different epitopes on the MRP8/14 heterocomplex (S100A8/S100A9). It is particularly suited for use in ELISA or similar assays. It was generated by immunising chickens with recombinant MRP8/14. Thus, the antibody does not discriminate between the individual subunits MRP8 or MRP14. In Immunohistochemistry, it detects early inflammatory macrophages and can thus be used for the classification of acute stage inflammation in tissue sections and in smears. The MRP8/14 specific ELISA has shown significant advantages in the early assessment of certain acute inflammatory conditions. Antigen Distribution on Tissue Sections: Macrophages in the red pulp of the spleen and in the liver; strongly expressed on macrophages in acute inflamed tissues (peridontitis, contact excema, urticaria, erythrodermia) where some endothelial and epidermal cells may also express this antigen; absent on normal resident mononuclear phagocytes in healthy tissues (skin, gut, thymus).
Formulation:	PBS with 0.09% Sodium Azide as preservative. State: Aff - Purified State: Liquid purified IgY fraction from Egg Yolk
Concentration:	1.0 mg/ml
Purification:	Affinity Chromatography.



[View online »](#)

Conjugation:	Unconjugated
Storage:	Store the antibody undiluted at 2-8°C for one month or (in aliquots) at -20°C for longer. Do not freeze working dilutions Avoid repeated freezing and thawing.
Stability:	Shelf life: One year from despatch.
Synonyms:	Calgranulin A/B, Calprotectin, L1 Protein, CFAG, P8, P14, CAGA, CAGB, CFAG, MRP-8, MRP-14

Product images:

BP4011 S100A8/A9 antibody staining of Human Skin Frozen Section.