

Product datasheet for **BP4005**

MCH2 (MCHR2) Chicken Polyclonal Antibody

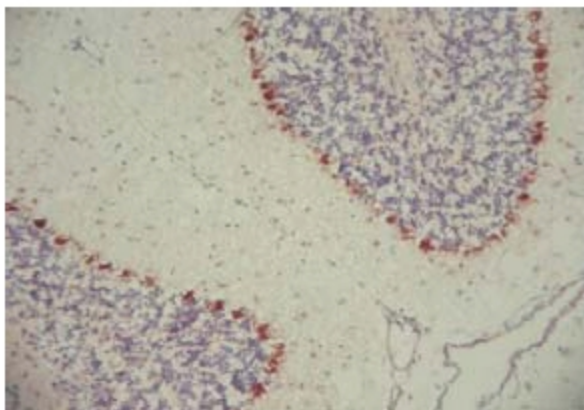
Product data:

Product Type:	Primary Antibodies
Applications:	IHC
Recommended Dilution:	Immunohistochemistry on Frozen Sections: 0.5-1 µg/ml (1/1000-1/2000). <i>Recommended Positive Control:</i> brain.
Reactivity:	Human, Mouse, Rat
Host:	Chicken
Clonality:	Polyclonal
Immunogen:	Peptide coupled to carrier protein. Antigen, Epitope: C-terminal portion of MCH-R2.
Specificity:	This antibody react with Mouse and Rat tissue as well. The staining pattern is extensive throughout the brain, and particularly striking in the ganglionic layer of the cerebellum.
Formulation:	PBS pH 7.2 containing 0.09% Sodium Azide as a preservative. State: Aff - Purified State: Liquid purified IgY fraction.
Concentration:	1.0 mg/ml
Purification:	Affinity Chromatography.
Conjugation:	Unconjugated
Storage:	Store the antibody at 2-8°C.
Stability:	Shelf life: six months from despatch.
Gene Name:	melanin concentrating hormone receptor 2
Database Link:	Entrez Gene 84539 Human Q969V1
Background:	Melanin Concentrating Hormone Receptor type 2 (MCH-R2) is a G-protein coupled seven transmembrane receptor that shares considerable homology with MCH-R1. Like MCH-R1, it binds MCH with high affinity. However, reports indicate that signaling through this receptor is pertussis insensitive, contrary to MCH-R1.
Synonyms:	MCH receptor 2, MCHR-2, MCH-R2, MCH-2R, G-protein coupled receptor 145, GPRv17, SLT



[View online »](#)

Product images:



Frozen sections of mouse brain stained with MCHR2 antibody (BP4005).