

Product datasheet for **BP4001**

ITM2B Chicken Polyclonal Antibody

Product data:

Product Type:	Primary Antibodies
Applications:	IHC, WB
Recommended Dilution:	Western blot <i>Not recommended for Immunohistochemistry.</i>
Reactivity:	Human
Host:	Chicken
Clonality:	Polyclonal
Immunogen:	Peptide coupled to carrier protein. Amino terminal sequence of BRI protein (ITM2B)
Specificity:	This antibody has been developed against the amino terminal sequence of BRI protein (ITM2B).
Formulation:	PBS, pH 7.2 State: Aff - Purified State: Liquid purified Ig fraction Preservative: 0.09% Sodium Azide
Concentration:	1.0 mg/ml
Purification:	Affinity Chromatography
Conjugation:	Unconjugated
Storage:	Store undiluted at 2-8°C for one month or (in aliquots) at -20°C for longer. Avoid repeated freezing and thawing.
Stability:	Shelf life: One year from despatch.
Gene Name:	integral membrane protein 2B
Database Link:	Entrez Gene 9445 Human Q9Y287
Background:	BRI protein (ITM2B) is a type-II single spanning transmembrane protein found in brain and other tissues. Mutation of the BRI gene with concomitant elongation of the carboxy terminus and its cleavage by the protease furin has been shown to lead to deposition of a protein fragment that may be involved in the pathogenesis of familial British dementia.
Synonyms:	ITM2B, BRI, BRI2, Integral membrane protein 2B, Transmembrane protein BRI



[View online »](#)

Product images:

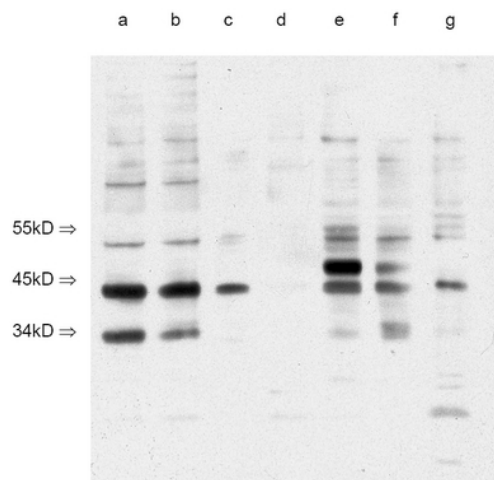


Figure 1. Western Blot of various organs stained with anti BRI (ITM2B), N-terminal B6 mouse strain. a: cortex, b: cerebellum, c: heart, d: lung, e: liver, f: kidney, g: pancreas.