

## Product datasheet for **BP169**

### Progesterone Rabbit Polyclonal Antibody

#### Product data:

Product Type:	Primary Antibodies
Applications:	IHC
Recommended Dilution:	<b>Immunohistochemistry on Frozen Sections:</b> 1/50. <b>Immunohistochemistry on Paraffin Sections:</b> 1/50 <b>Positive Control Tissue:</b> Breast carcinoma and normal young ovarian tissue. Progesterone antibody requires antigen retrieval using heat treatment prior to staining of paraffin sections. Sodium citrate buffer pH 6.0 is recommended for this purpose.
Reactivity:	var.
Host:	Rabbit
Isotype:	IgG
Clonality:	Polyclonal
Immunogen:	Progesterone conjugated to BSA
Specificity:	This antibody is specific for Progesterone. In normal tissues it stains granulosa cells and theca cells. It can also be used to stain tumourous Sertoli-Leydig, granulosa and theca cells.
Formulation:	PBS State: Purified State: Liquid purified IgG fraction Preservative: 0.09% Sodium Azide
Concentration:	lot specific
Purification:	Affinity Chromatography on Protein G
Conjugation:	Unconjugated
Storage:	Store undiluted at 2-8°C for one month or (in aliquots) at -20°C for longer. Avoid repeated freezing and thawing.
Stability:	Shelf life: one year from despatch.



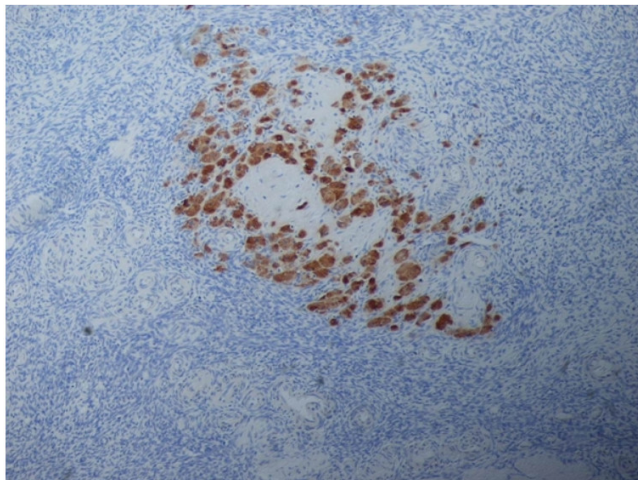
[View online »](#)

**Background:**

Progesterone is a steroid hormone synthesized from the cholesterol derivative, pregnenolone, in the cortex of the adrenal gland. Progesterone is secreted by the corpus luteum and acts to prepare the endometrium for the implantation of a fertilized egg. During pregnancy, it is secreted by the placenta in order to prevent spontaneous abortion and to stimulate the development of mammary tissue to produce milk. Progesterone is available as a pharmaceutical that can be used to treat menstrual disorders and for the prevention of miscarriage.

**Synonyms:**

20-dione, pregn-4-ene-3

**Product images:**

Immunoperoxidase staining of paraffin embedded human ovary tissue with Rabbit anti Progesterone antibody Cat.-No BP169