

## Product datasheet for **BM618**

### EMA (MUC1) Mouse Monoclonal Antibody [Clone ID: VU-3C6]

#### Product data:

Product Type:	Primary Antibodies
Clone Name:	VU-3C6
Applications:	FC, IHC, IP
Recommended Dilution:	<b>Flow Cytometry.</b> <b>Western Blot:</b> 1/200-1/1000. <b>Immunoprecipitation.</b> <b>Immunohistochemistry on Frozen Sections.</b> <b>Immunohistochemistry on Paraffin Sections:</b> Requires antigen retrieval using heat treatment (Sodium citrate buffer pH 6.0) prior to staining of paraffin sections.
Reactivity:	Human
Host:	Mouse
Isotype:	IgG1
Clonality:	Monoclonal
Immunogen:	Human breast cancer cell line ZR-75-1.
Specificity:	The dominant epitope recognized by this antibody is the 12mer GVTSAPDTRPAP of the Mucin 1 tandem repeat. This antibody has been tested on Frozen Human ovarian carcinoma tissue sections and paraffin embedded sections from normal breast tissue. It also reacts weakly with sections of small intestine and colon.
Formulation:	PBS State: Purified State: Liquid purified IgG fraction Preservative: 0.09% Sodium Azide
Concentration:	lot specific
Purification:	Affinity Chromatography on Protein A
Conjugation:	Unconjugated
Storage:	Store undiluted at 2-8°C for one month or (in aliquots) at -20°C for longer. Avoid repeated freezing and thawing.
Stability:	Shelf life: one year from despatch.



[View online »](#)

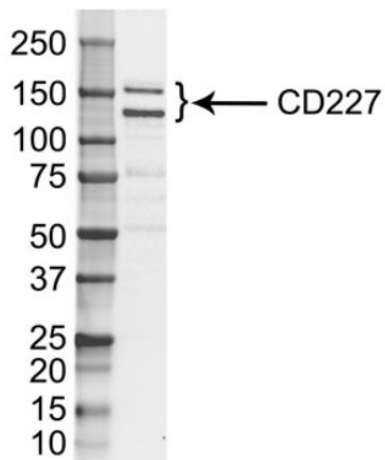
**Gene Name:** mucin 1, cell surface associated

**Database Link:** [Entrez Gene 4582 Human P15941](#)

**Background:** MUC1 is a large cell surface mucin glycoprotein expressed by most glandular and ductal epithelial cells and some hematopoietic cell lineages. It is expressed on most secretory epithelium, including mammary gland and some hematopoietic cells. It is expressed abundantly in lactating mammary glands and overexpressed abundantly in >90% breast carcinomas and metastases. Transgenic MUC1 has been shown to associate with all four cebb receptors and localize with erbB1 (EGFR) in lactating glands. The MUC1 gene contains seven exons and produces several different alternatively spliced variants. The major expressed form of MUC1 uses all seven exons and is a type 1 transmembrane protein with a large extracellular tandem repeat domain. The tandem repeat domain is highly O glycosylated and alterations in glycosylation have been shown in epithelial cancer cells.

**Synonyms:** MUC-1, PEMT, Episialin, EMA, H23AG, PUM, DF3, CA 15-3

**Product images:**



Western Blot analysis of MCF7 whole cell lysate probed with Mouse anti human CD227 (Cat.-No BM618) followed by Rabbit F(ab')<sub>2</sub> anti Mouse IgG -HRP performed under reducing conditions