

Product datasheet for **BM604S**

beta 2 Microglobulin (B2M) Mouse Monoclonal Antibody [Clone ID: B2M-01]

Product data:

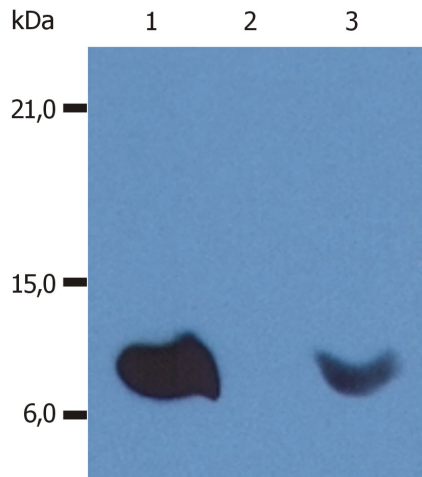
Product Type:	Primary Antibodies
Clone Name:	B2M-01
Applications:	ELISA, FC, IF, IHC, IP, R, WB
Recommended Dilution:	Western blotting: Recommended dilution: 2-4 µg/ml; positive control: U937 human histiocytic lymphoma cell line, RAJI human Burkitt lymphoma cell line, negative control: EL4 mouse lymphoblastic lymphoma cell line; both reducing and non-reducing conditions. Immunohistochemistry (paraffin sections): Recommended dilution: 10 µg/ml; positive tissue: kidney glomeruli. Flow cytometry: Recommended dilution: 0.5-4 µg/ml; positive control: peripheral blood lymphocytes, negative control: DAUDI human Burkitt lymphoma cell line, erythrocytes. ELISA: Working dilution should be determined by investigator. RIA: Use at an assay dependent concentration. The dissociation constant of the antibody soluble beta2-microglobulin is 1.5×10^{-8} mol/l as determined by competitive RIA. Immunoprecipitation: The antibody B2M-01 coprecipitates beta2-microglobulin (12 kDa) and HLA antigens (45 kDa) from the lysates of human lymphoid cells.
Reactivity:	Human
Host:	Mouse
Isotype:	IgG2a
Clonality:	Monoclonal
Immunogen:	Purified Human beta-2-Microglobulin
Specificity:	he antibody reacts with beta-2-Microglobulin (B2M) associated with cell-surface MHC Class I molecules and other membrane antigens as well as with soluble beta-2-Microglobulin. Negative Species: Mouse, Bovine, Canine (Dog), Rabbit and Chicken.
Formulation:	PBS, pH~7.4 State: Purified State: Liquid purified IgG fraction (> 95% pure by SDS-PAGE) Preservative: 15 mM Sodium Azide
Concentration:	lot specific
Purification:	Sequential precipitation method with caprylic acid and ammonium sulphate



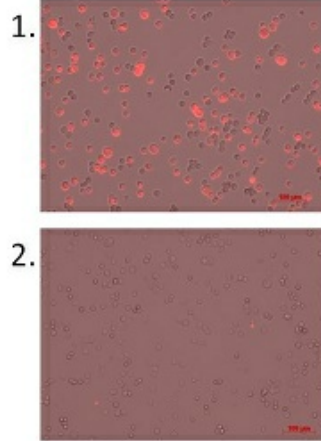
[View online »](#)

Conjugation:	Unconjugated
Storage:	Store undiluted at 2-8°C. DO NOT FREEZE!
Stability:	Shelf life: one year from despatch.
Gene Name:	beta-2-microglobulin
Database Link:	Entrez Gene 567 Human P61769
Background:	Beta-2 Microglobulin non-covalently associates with the 44 kDa alpha chain to form the HLA Class I antigen complex. Human beta 2 Microglobulin associated with HLA Class I antigens are expressed on many types of cells including lymphocytes, thymocytes, monocytes, granulocytes, platelets, endothelial cells, and epithelial cells. It is absent on erythrocytes.
Synonyms:	B2M, Beta-2 microglobulin, Beta 2 microglobulin

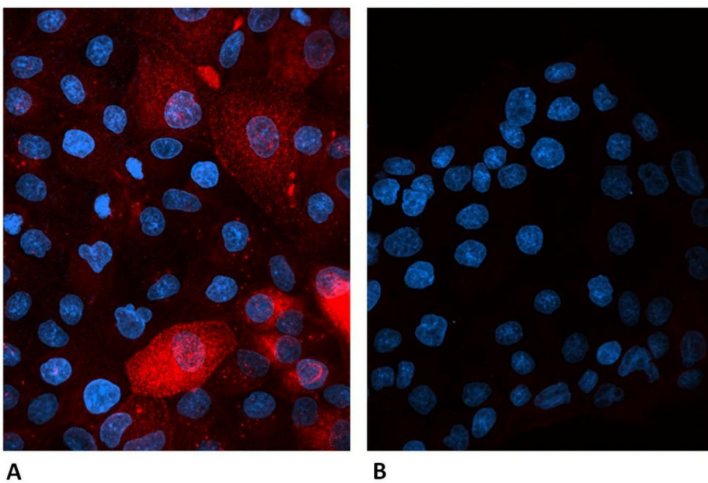
Product images:



Western Blotting analysis (non-reducing conditions) of whole cell lysate of various cell lines using anti-human beta2-microglobulin (B2M-01). Lane 1: RAJI human Burkitt lymphoma cell line; Lane 2: EL4 mouse lymphoblastic lymphoma cell line; Lane 3: U937 human histiocytic lymphoma cell line



1. Murine 4T1 cells were mixed with human DU-145 cells and stained with 1 ug Beta-2-microglobulin antibody. Anti-mouse Cy3 was used as a secondary antibody. Red stained cells mark the Beta-2-microglobulin positive human DU-145 cells. 2. Murine 4T1 cells were stained with 1 ug Beta-2-microglobulin antibody. Anti-mouse Cy3 was used as a secondary antibody. Murine 4T1 cells are negative for Beta-2-microglobulin staining. Pictures by courtesy of Fraunhofer ITEM, Regensburg, Germany.



Confocal microscopy of Hman Beta-2-microglobulin-transfected canine cells labeled A) with antibody Alexa Fluor® 647 conjugate and B) with Alexa Fluor® 647 conjugated Mouse IgG2a Isotype Control. Cells were fixed with 4% PFA and permeabilized with 0.1% PBS-Tween20 containing 2% BSA. Antibody concentration 2 ug/ml.