

## Product datasheet for **BM604PE**

### beta 2 Microglobulin (B2M) Mouse Monoclonal Antibody [Clone ID: B2M-01]

#### Product data:

Product Type:	Primary Antibodies
Clone Name:	B2M-01
Applications:	FC, WB
Recommended Dilution:	<b>Flow Cytometry:</b> 1 µg/ml. <i>Positive Control:</i> Peripheral blood lymphocytes. <i>Negative Control:</i> DAUDI human Burkitt lymphoma cell line, erythrocytes.
Reactivity:	Human
Host:	Mouse
Isotype:	IgG2a
Clonality:	Monoclonal
Immunogen:	Purified human beta2-microglobulin
Specificity:	This antibody reacts with beta2-microglobulin (beta2M) associated with cell-surface MHC Class I molecules and other membrane antigens as well as with soluble beta2-microglobulin. Beta2M is a 12 kDa Ig like glycoprotein expressed on lymphocytes, thymocytes, monocytes, granulocytes, platelets, endothelial cells and epithelial cells. It is absent on erythrocytes.
Formulation:	Phosphate buffered saline (PBS) solution containing 15mM sodium azide Label: PE State: Liquid purified Ig fraction Label: Conjugated with R-Phycoerythrin under optimum conditions. The conjugate is purified by size-exclusion chromatography.
Concentration:	lot specific
Purification:	Size-Exclusion Chromatography
Conjugation:	PE
Storage:	Store the antibody undiluted at 2-8°C. <b>DO NOT FREEZE!</b> This product is photosensitive and should be protected from light.
Stability:	Shelf life: one year from despatch.
Gene Name:	beta-2-microglobulin



[View online »](#)

**Database Link:** [Entrez Gene 567 Human P61769](#)

**Background:** Beta2-microglobulin non-covalently associates with the 44 kDa alpha chain to forms the HLA Class I antigen complex. Human beta2-microglobulin associated with HLA Class I antigens is expressed on many types of cells including lymphocytes, thymocytes, monocytes, granulocytes, platelets, endothelial cells, and epithelial cells. It is absent on erythrocytes.

**Synonyms:** B2M, Beta-2 microglobulin, Beta 2 microglobulin

**Protein Families:** Druggable Genome, Secreted Protein

**Protein Pathways:** Antigen processing and presentation

**Product images:**

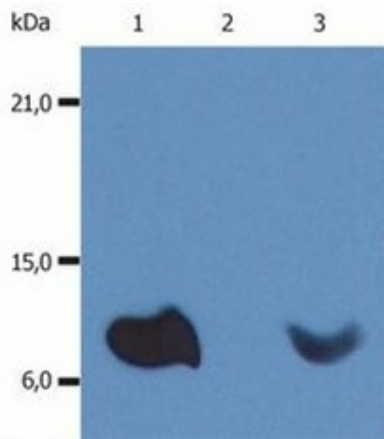
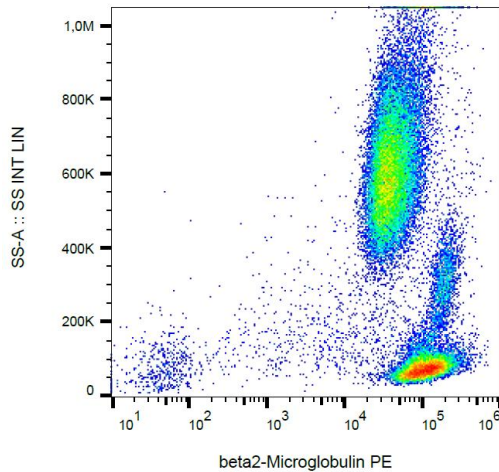


Fig. 1. Western Blotting

Western blot analysis (non-reducing conditions) of whole cell lysate of various cell lines using anti-human  $\beta$ 2-microglobulin. Lane 1: RAJI human Burkitt lymphoma cell line Lane 2: EL4 mouse lymphoblastic lymphoma cell line Lane 3: U937 human histiocytic lymphoma cell line



Surface staining of b2-microglobulin in human peripheral blood with anti-b2-microglobulin (B2M-01) PE.