

Product datasheet for **BM604HRP**

beta 2 Microglobulin (B2M) Mouse Monoclonal Antibody [Clone ID: B2M-01]

Product data:

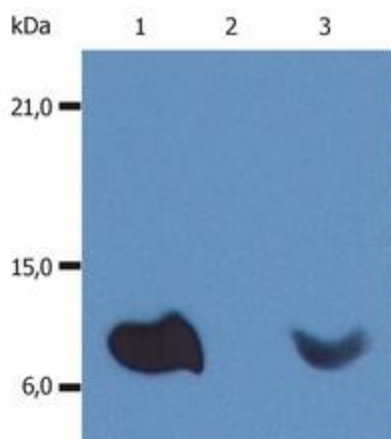
Product Type:	Primary Antibodies
Clone Name:	B2M-01
Applications:	ELISA, WB
Recommended Dilution:	The antibody is designed for quantitative determination of soluble beta 2-Microglobulin/MHC Class I complexes. This antibody can also be used for detection of free beta 2-Microglobulin by Western blotting. ELISA. Western blot (Both Reducing and non-Reducing conditions): <i>Recommended Dilution:</i> 2-4 µg/ml. <i>Positive Control:</i> U937 Human histiocytic lymphoma cell line, RAJI human Burkitt lymphoma cell line. <i>Negative Control:</i> EL4 mouse lymphoblastic lymphoma cell line. <i>Sample Preparation:</i> Resuspend approx. 50 mil. cells in 1 ml cold Lysis buffer (1% laurylmaltoside in 20 mM Tris/Cl, 100 mM NaCl pH 8.2, 50 mM NaF including Protease inhibitor Cocktail). Incubate 60 min on ice. Centrifuge to remove cell debris. Mix lysate with non-reducing/reducing Laemmli SDS-PAGE sample buffer.
Reactivity:	Human
Host:	Mouse
Isotype:	IgG2a
Clonality:	Monoclonal
Immunogen:	Purified Human beta-2-Microglobulin
Specificity:	The antibody reacts with beta-2-Microglobulin (B2M) associated with cell-surface MHC Class I molecules and other membrane antigens as well as with soluble beta-2-Microglobulin. Negative Species: Mouse, Bovine, Canine (Dog), Rabbit and Chicken.
Formulation:	PBS Label: HRP State: Liquid purified Ig fraction Preservative: 0.01% (w/v) Thimerosal Label: Conjugated with Horseradish Peroxidase of high specific activity and RZ=3. The reagent is free of unconjugated as determined by size-exclusion chromatography.



[View online »](#)

Concentration:	lot specific
Conjugation:	HRP
Storage:	Store the antibody undiluted at 2-8°C. DO NOT FREEZE! This product is photosensitive and should be protected from light. Should it contain a precipitate we recommend microcentrifugation before use.
Stability:	Shelf life: one year from despatch.
Gene Name:	beta-2-microglobulin
Database Link:	Entrez Gene 567 Human P61769
Background:	b2M non-covalently associates with the 44 kDa alpha chain to forms the HLA Class I antigen complex. Human beta2-microglobulin associated with HLA Class I antigens is expressed on many types of cells including lymphocytes, thymocytes, monocytes, granulocytes, platelets, endothelial cells, and epithelial cells. It is absent on erythrocytes.
Synonyms:	B2M, Beta-2 microglobulin, Beta 2 microglobulin

Product images:



Western Blotting analysis (non-reducing conditions) of whole cell lysate of various cell lines using anti-Human β 2-microglobulin antibody. Lane 1: RAJI Human Burkitt lymphoma cell line. Lane 2: EL4 Mouse lymphoblastic lymphoma cell line. Lane 3: U937 Human histiocytic lymphoma cell line.