

Product datasheet for **BM604F**

beta 2 Microglobulin (B2M) Mouse Monoclonal Antibody [Clone ID: B2M-01]

Product data:

Product Type:	Primary Antibodies
Clone Name:	B2M-01
Applications:	FC, IF
Recommended Dilution:	Immunofluorescence. Flow Cytometry (1/200).
Reactivity:	Human
Host:	Mouse
Isotype:	IgG2a
Clonality:	Monoclonal
Immunogen:	Purified Human beta2-Microglobulin
Specificity:	The antibody reacts with beta2-Microglobulin associated with cell-surface MHC Class I molecules and other membrane antigens as well as with soluble beta2-Microglobulin. Negative Species: Mouse, Bovine, Canine (Dog), Rabbit and Chicken.
Formulation:	PBS, pH~7.4 Label: FITC State: Liquid purified Ig fraction Preservative: 15 mM Sodium Azide Label: Conjugated with Fluorescein isothiocyanate (FITC) under optimum conditions. The reagent is free of unconjugated FITC.
Concentration:	lot specific
Conjugation:	FITC
Storage:	Store undiluted at 2-8°C. DO NOT FREEZE! This product is photosensitive and should be protected from light. Avoid repeated freezing and thawing.
Stability:	Shelf life: one year from despatch.
Gene Name:	beta-2-microglobulin



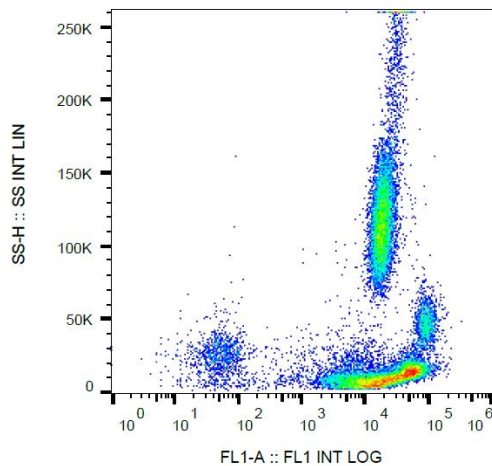
[View online »](#)

Database Link: [Entrez Gene 567 Human P61769](#)

Background: b2M non-covalently associates with the 44 kDa alpha chain to forms the HLA Class I antigen complex. Human beta2-microglobulin associated with HLA Class I antigens is expressed on many types of cells including lymphocytes, thymocytes, monocytes, granulocytes, platelets, endothelial cells, and epithelial cells. It is absent on erythrocytes.

Synonyms: B2M, Beta-2 microglobulin, Beta 2 microglobulin

Product images:



Surface staining of β 2-microglobulin in human peripheral blood with anti- β 2-microglobulin (B2M-01) FITC.