

Product datasheet for **BM604B**

beta 2 Microglobulin (B2M) Mouse Monoclonal Antibody [Clone ID: B2M-01]

Product data:

Product Type:	Primary Antibodies
Clone Name:	B2M-01
Applications:	FC
Recommended Dilution:	Biotinylated antibody is designed for Indirect Immunofluorescence analysis by Flow Cytometry . <i>Recommended Working Dilutions: 1/200 as a starting point.</i>
Reactivity:	Human
Host:	Mouse
Isotype:	IgG2a
Clonality:	Monoclonal
Immunogen:	Purified Human Beta-2-microglobulin
Specificity:	The antibody reacts with Beta-2-microglobulin (b2M) associated with cell-surface MHC Class I molecules and other membrane antigens as well as with soluble Beta-2-microglobulin.
Formulation:	Phosphate buffered saline (PBS), pH~7.4 Label: Biotin State: Liquid purified Ig fraction Preservative: 15 mM Sodium Azide Label: Conjugated with Biotin-LC-NHS under optimum conditions. The reagent is free of unconjugated biotin.
Concentration:	lot specific
Conjugation:	Biotin
Storage:	Store undiluted at 2-8°C. DO NOT FREEZE!
Stability:	Shelf life: one year from despatch.
Gene Name:	beta-2-microglobulin
Database Link:	Entrez Gene 567 Human P61769



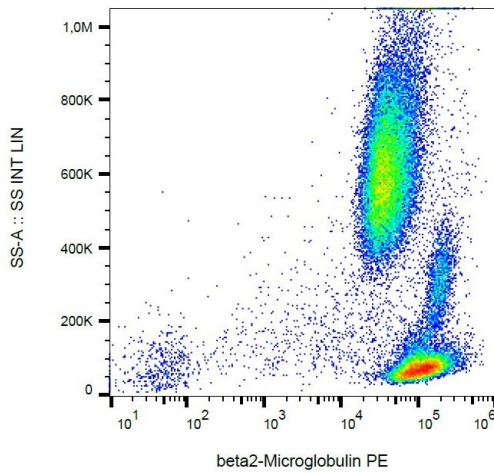
[View online »](#)

Background:

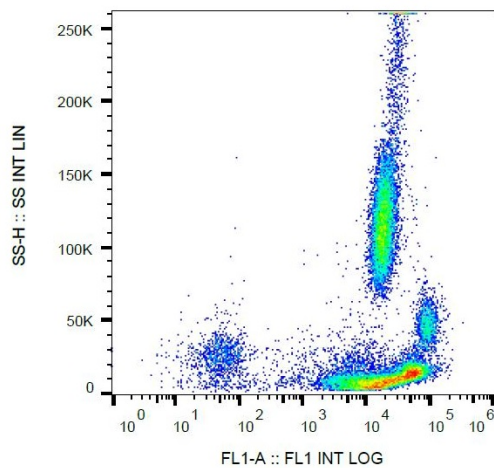
b2M is a 12 kDa Ig like glycoprotein. It non-covalently associates with the 44 kDa alpha chain to forms the HLA Class I antigen complex. Human beta2-microglobulin associated with HLA Class I antigens is expressed on many types of cells including lymphocytes, thymocytes, monocytes, granulocytes, platelets, endothelial cells, and epithelial cells. It is absent on erythrocytes.

Synonyms:

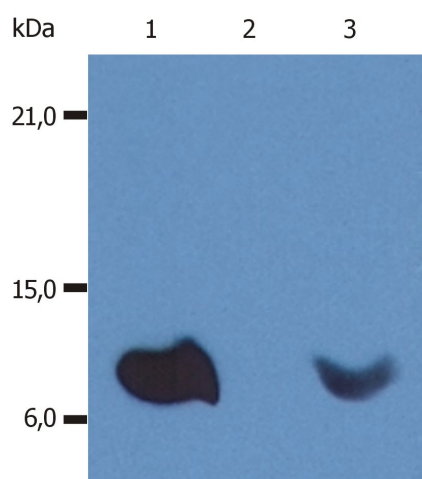
B2M, Beta-2 microglobulin, Beta 2 microglobulin

Product images:


Surface staining of β 2-microglobulin in human peripheral blood with anti- β 2-microglobulin (B2M-01) PE.



Surface staining of β 2-microglobulin in human peripheral blood with anti- β 2-microglobulin (B2M-01) FITC.



Western Blotting analysis (non-reducing conditions) of whole cell lysate of various cell lines using anti-human β 2-microglobulin (B2M-01).

Lane 1: RAJ1 human Burkitt lymphoma cell line
Lane 2: EL4 mouse lymphoblastic lymphoma cell line

Lane 3: U937 human histiocytic lymphoma cell line