

Product datasheet for **BM6046P**

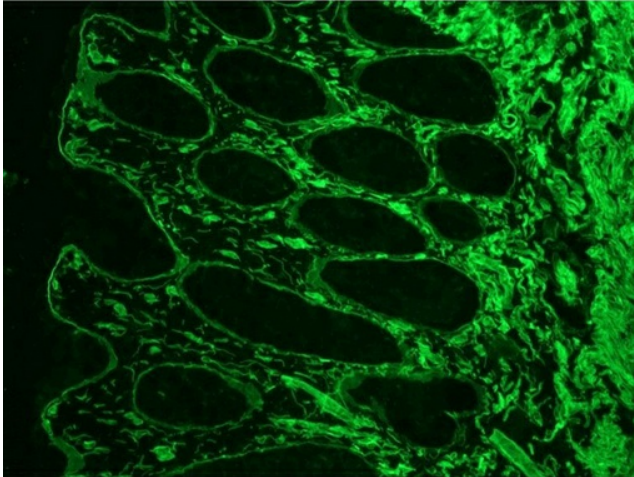
Laminin Rat Monoclonal Antibody [Clone ID: A5]

Product data:

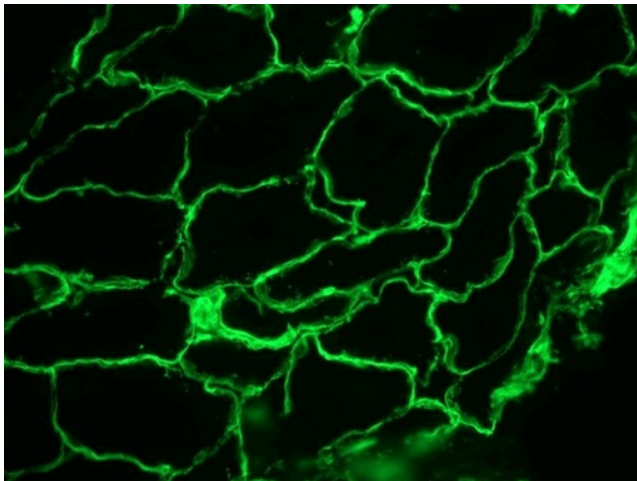
Product Type:	Primary Antibodies
Clone Name:	A5
Applications:	IF, IHC
Recommended Dilution:	Immunocytochemistry/Immunofluorescence. Immunohistochemistry on Frozen Tissues: 1/25-1/200 with avidin-biotinylated horseradish peroxidase complex (ABC) as detection reagent.
Reactivity:	Human, Mouse, Porcine
Host:	Rat
Isotype:	IgG2a
Clonality:	Monoclonal
Immunogen:	Laminin preparation from EHS mouse tumor.
Specificity:	This antibody reacts with Laminin.
Formulation:	PBS State: Purified State: Liquid purified IgG fraction Preservative: 0.09% Sodium Azide
Concentration:	lot specific
Conjugation:	Unconjugated
Storage:	Store undiluted at 2-8°C for one month or (in small aliquots) at -20°C for longer. Avoid repeated freezing and thawing.
Stability:	Shelf life: one year from despatch.
Background:	Basement membrane components play an important role in cell adhesion, locomotion, differentiation and embryonic compartmentalization. Laminin anchors cells to the basement membrane through interactions with integrins at the cell surface and collagens in the basement membrane.



[View online »](#)

Product images:

Immunofluorescence staining of Frozen Sections from Human colon (methanol fixed) using BM6046P, showing the localization of laminin in the connective tissue and in basement membranes surrounding the epithelial crypts.



Immunofluorescence staining of Frozen Sections from Pig striated skeletal muscle (methanol fixed) using BM6046P, showing the localization of laminin in the connective tissue and in basement membranes surrounding the individual myofibers.