

## Product datasheet for **BM6019P**

### **K Cadherin (CDH6) Mouse Monoclonal Antibody [Clone ID: 2B6]**

#### Product data:

Product Type:	Primary Antibodies
Clone Name:	2B6
Applications:	IF, IHC, WB
Recommended Dilution:	<b>Immunoblotting:</b> 1/25-1/250. <b>Immunocytochemistry.</b> <b>Immunohistochemistry on Frozen Sections:</b> Use a PBS buffer containing 0.1 mM CaCl <sub>2</sub> and 0.1 mM MgCl <sub>2</sub> . <b>Immunohistochemistry on Paraffin Sections.</b> <i>Recommended Dilutions:</i> 1/25-1/250 for immunohistochemistry with ABC as detection reagent.
Reactivity:	Human
Host:	Mouse
Isotype:	IgG1
Clonality:	Monoclonal
Immunogen:	Affinity purified extracellular domain of Human Cadherin-6-GST fusion protein
Specificity:	Clone 2B6 recognizes the extracellular domain of Cadherin-6.
Formulation:	PBS State: Purified State: Liquid purified IgG fraction Preservative: 0.09% Sodium Azide
Concentration:	lot specific
Conjugation:	Unconjugated
Storage:	Store undiluted at 2-8°C for one month or (in aliquots) at -20°C for longer. Avoid repeated freezing and thawing.
Stability:	Shelf life: one year from despatch.
Gene Name:	cadherin 6
Database Link:	<a href="#">Entrez Gene 1004 Human P55285</a>



[View online »](#)

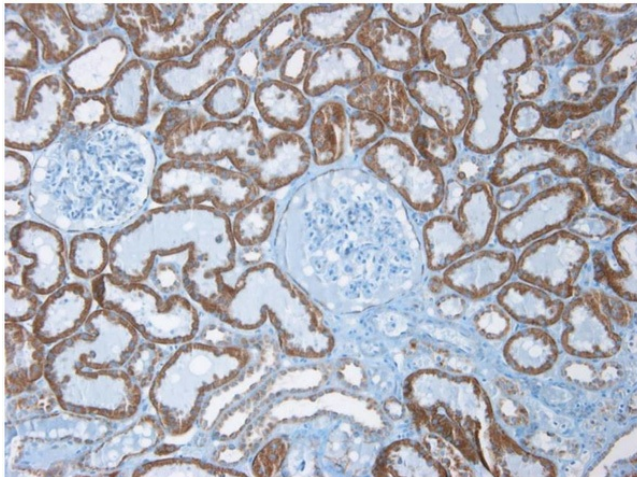
**Background:**

Cadherins constitute a family of transmembrane glycoproteins involved in  $\text{Ca}^{2+}$ -dependent cell-cell interactions. The members of this family are differentially expressed in various tissues. They function in the maintenance of tissue integrity and morphogenesis. The cadherins generally contain five extracellular repeats, a transmembrane domain and a cytoplasmic tail that binds to the catenin family of cytoskeletal anchoring proteins which also function as signal transducers.

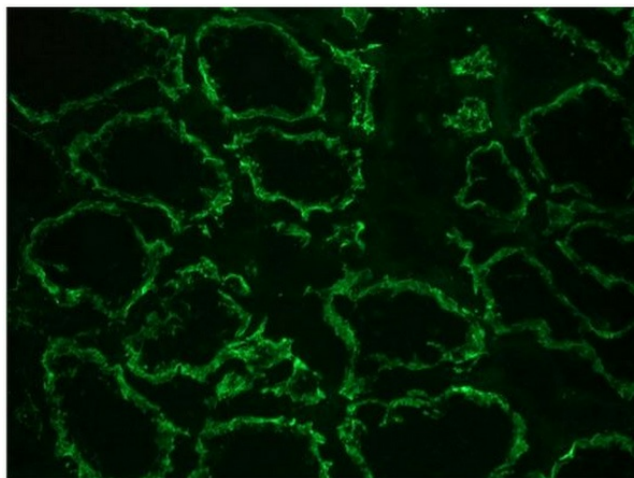
The extracellular domains are responsible for the specificity of homophilic interactions between cells expressing the same cadherin. Cadherins are divided into type I and type II subgroups. Type I cadherins include epithelial cadherin (E-cadherin, cadherin-1 or uvomorulin), neural cadherin (N-cadherin or cadherin-2), placental cadherin (P-cadherin or cadherin-3) and retinal cadherin (R-cadherin or cadherin-4). Kidney cadherin (K-cadherin or cadherin-6) and osteoblast cadherin (OB-cadherin or cadherin-11) are type II cadherins. Cadherin-6 is expressed in the proximal tubule epithelium of the kidney from which most renal cell carcinomas are derived.

**Synonyms:**

CDH6, Kidney cadherin, Cadherin K, K-Cadherin

**Product images:**

Immunohistochemistry on Paraffin Section of Human kidney



Immunohistochemistry on Frozen Section of Human kidney: positive reactivity in renal tubules (epithelium)