

Product datasheet for **BM6013P**

NFH (NEFH) (phosphospecific) Mouse Monoclonal Antibody [Clone ID: RNF404]

Product data:

Product Type:	Primary Antibodies
Clone Name:	RNF404
Applications:	IHC, WB
Recommended Dilution:	Immunoblotting Immunohistochemistry on Frozen Sections. Immunohistochemistry on Paraffin Sections. <i>Recommended Dilutions:</i> 1/50-1/100 for Immunohistochemistry with avidin-biotinylated horseradish peroxidase complex (ABC) as detection reagent, and 1/100-1/500 for Immunoblotting.
Reactivity:	Bovine, Canine, Chicken, Guinea Pig, Human, Mouse, Rabbit, Rat, Sheep, Xenopus
Host:	Mouse
Isotype:	IgG2a
Clonality:	Monoclonal
Immunogen:	Neurofilament preparation of calf brain tissue.
Specificity:	RNF404 reacts exclusively with the phosphorylated isoform of the 200 kD neurofilament protein. Reacts with Bovine, Canine, Chicken, Guinea Pig, Human, Monkey, Mouse, Rabbit, Rat, Sheep, Xenopus.
Formulation:	PBS State: Purified State: Liquid purified IgG fraction Preservative: 0.09% Sodium Azide
Concentration:	lot specific
Conjugation:	Unconjugated
Storage:	Store undiluted at 2-8°C for one month or (in aliquots) at -20°C for longer. Avoid repeated freeze-thaw cycles.
Stability:	Shelf life: One year from despatch.
Gene Name:	neurofilament, heavy polypeptide



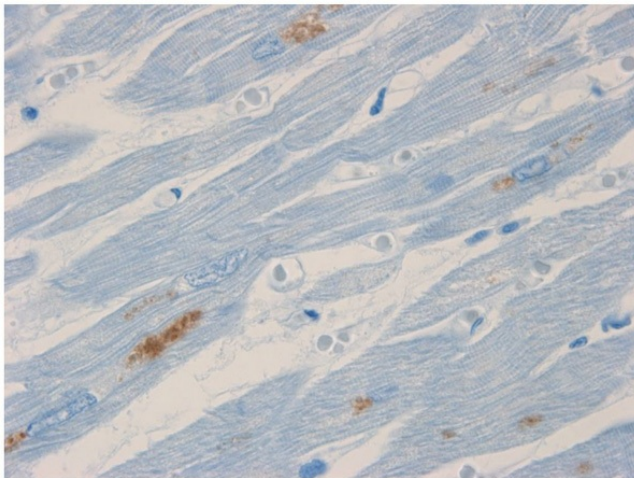
[View online »](#)

Database Link: [Entrez Gene 4744 Human P12036](#)

Background: Like most other intermediate filament proteins (IFPs), the expression of the different neuronal IFPs regulated. The neurofilament (NF) triplet proteins (70, 160, and 200 kDa) occur in both the central and peripheral nervous system and are normally restricted to neurons. The 70 kDa NF-protein can self-assemble into a filamentous structure, whereas the 160 kDa and 200 kDa NF-proteins require the presence of the 70 kDa NF-protein to co-assemble. All three NF proteins can be detected by immunohistochemical methods at day 9 or 10 after gestation in the mouse embryo. Although IFPs of the neurofilament type are normally restricted to neurons, there are reports on their expression in non-neuronal cells as well. For example, in heart conduction myocytes NF proteins are expressed together with desmin. In tumor pathology ganglioneuroblastomas and some of the other neuroblastomas are strongly positive with the neurofilament antisera. Also, some neuro-endocrine malignancies may show NF positivity. In cell cultures of neural tissues the neurofilament antibodies can monitor in vitro differentiation.

Synonyms: NEFH, NF-H, KIAA0845, NFH, 200 kDa neurofilament protein, Neurofilament triplet H protein, (Neuronal Marker), heavy polypeptide

Product images:



Immunohistochemistry on Paraffin Section of Human heart