

Product datasheet for **BM6008P**

Vimentin (VIM) Mouse Monoclonal Antibody [Clone ID: RV202]

Product data:

Product Type:	Primary Antibodies
Clone Name:	RV202
Applications:	FC, IF, IHC, WB
Recommended Dilution:	Immunoblotting. Flow Cytometry. Immunocytochemistry. Immunofluorescence. Immunohistochemistry on Frozen Sections. Immunohistochemistry on Paraffin Sections. <i>Recommended Dilutions:</i> 1/100-1/200 for Flow Cytometry, and for Immunohistochemistry with avidin-biotinylated horseradish peroxidase complex (ABC) as detection reagent, and 1/100-1/1000 for Immunoblotting applications.
Reactivity:	Canine, Chicken, Goat, Hamster, Human, Monkey, Mouse, Porcine, Rat, Xenopus, Zebrafish
Host:	Mouse
Isotype:	IgG1
Clonality:	Monoclonal
Immunogen:	Cytoskeletal Vimentin extract of calf lens.
Specificity:	RV202 reacts exclusively with Vimentin, which is expressed in mesenchymal cells and mesenchymal derived tumors e.g. lymphoma, sarcoma and melanoma.
Formulation:	PBS State: Purified State: Liquid purified IgG fraction Preservative: 0.09% Sodium Azide
Concentration:	lot specific
Conjugation:	Unconjugated
Storage:	Store undiluted at 2-8°C for one month or (in aliquots) at -20°C for longer. Avoid repeated freeze-thaw cycles.
Stability:	Shelf life: One year from despatch.
Gene Name:	vimentin



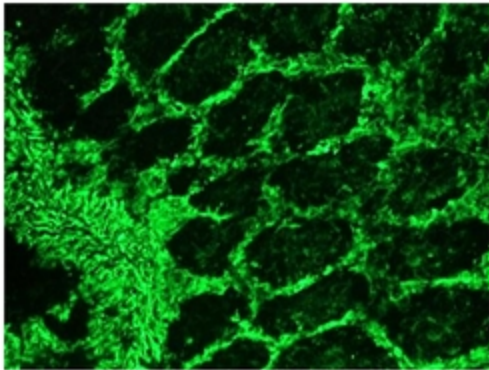
[View online »](#)

Database Link: [Entrez Gene 7431 Human P08670](#)

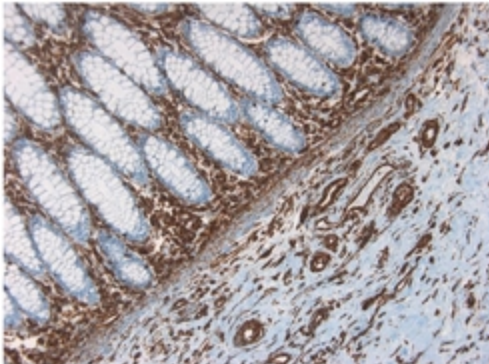
Background: Vimentin (57 kDa) is the intermediate filament protein (IFP) of mesenchymal cells. This IFP however often deviates from the tissue-specific and developmentally regulated pattern of expression. Besides its typical expression in most cultured cells, vimentin is also expressed together with several other IFPs during early stages of development. As differentiation proceeds, vimentin is exchanged for the tissue-specific intermediate filament type. Also in cancers, vimentin is often expressed in addition to the tissue-specific IFP.

Synonyms: VIM

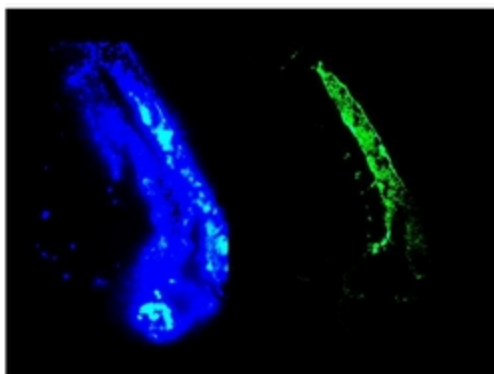
Product images:



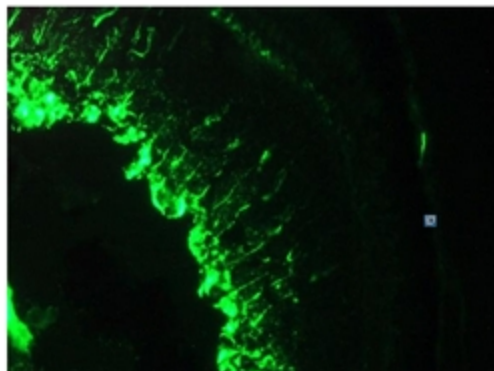
Immunohistochemistry on Frozen section of swine colon using Vimentin Antibody showing positive staining in connective tissue cells and no reactivity in epithelial cells.



Immunohistochemistry on paraffin section of human colon.



Immunofluorescence staining of the developing neural tube in a 2 days old Zebrafish embryo. Left panel: DAPI-staining of cell nuclei, providing an overview of the tissue section used for immunostaining



Immunofluorescence staining of a 1 month old Zebrafish embryo