

## Product datasheet for **BM6008F**

### Vimentin (VIM) Mouse Monoclonal Antibody [Clone ID: RV202]

#### Product data:

Product Type:	Primary Antibodies
Clone Name:	RV202
Applications:	FC, IF, IHC
Recommended Dilution:	<b>Flow Cytometry.</b> <b>Immunocytochemistry (cell cultures and cytopins).</b> <b>Immunofluorescence.</b> <b>Immunohistochemistry on Frozen Sections.</b> <i>Recommended Dilutions: 1/10.</i>
Reactivity:	Canine, Chicken, Goat, Human, Monkey, Mouse, Porcine, Rat, Zebrafish
Host:	Mouse
Isotype:	IgG1
Clonality:	Monoclonal
Immunogen:	Cytoskeletal Vimentin extract of Bovine lens.
Specificity:	RV202 reacts exclusively with Vimentin, which is expressed in mesenchymal cells and mesenchymal derived tumors e.g. lymphoma, sarcoma and melanoma.
Formulation:	PBS Label: FITC State: Liquid IgG fraction Stabilizer: 0.1% BSA Preservative: 0.09% Sodium Azide
Conjugation:	FITC
Storage:	Store undiluted at 2-8°C for one month or (in aliquots) at -20°C for longer. This product is photosensitive and should be protected from light. Avoid repeated freezing and thawing.
Stability:	Shelf life: one year from despatch.
Gene Name:	vimentin
Database Link:	<a href="#">Entrez Gene 7431 Human P08670</a>



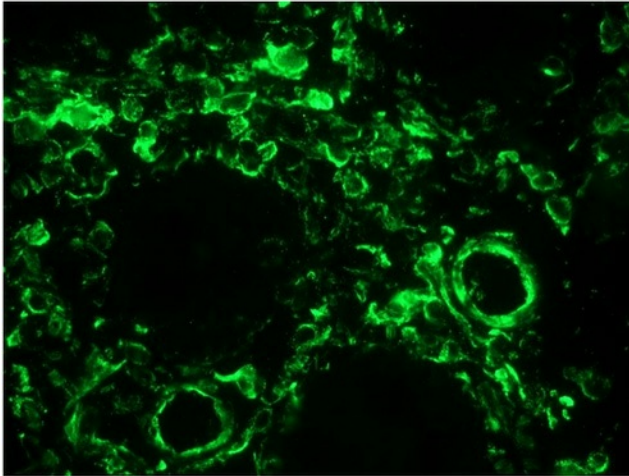
[View online »](#)

**Background:**

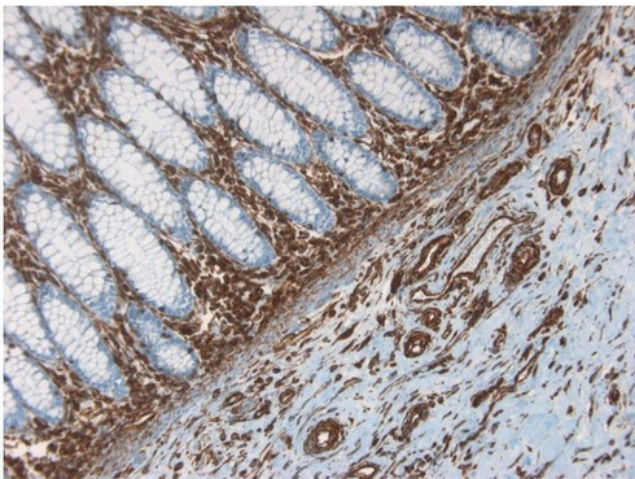
Vimentin (57 kDa) is the intermediate filament protein (IFP) of mesenchymal cells. This IFP however often deviates from the tissue-specific and developmentally regulated pattern of expression. Besides its typical expression in most cultured cells, vimentin is also expressed together with several other IFPs during early stages of development. As differentiation proceeds, vimentin is exchanged for the tissue-specific intermediate filament type. Also in cancers, vimentin is often expressed in addition to the tissue-specific IFP.

**Synonyms:**

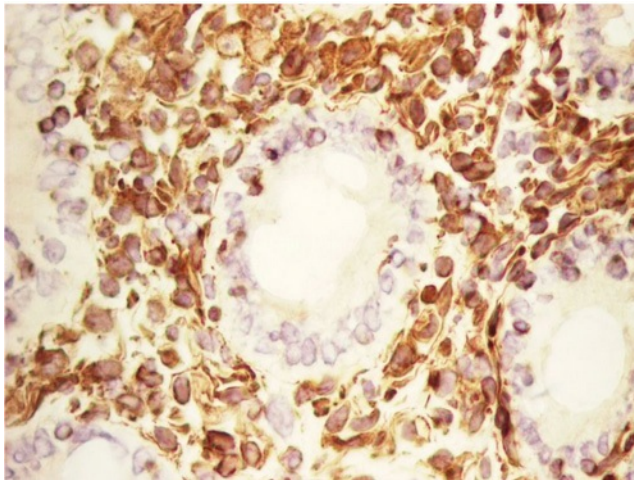
VIM

**Product images:**

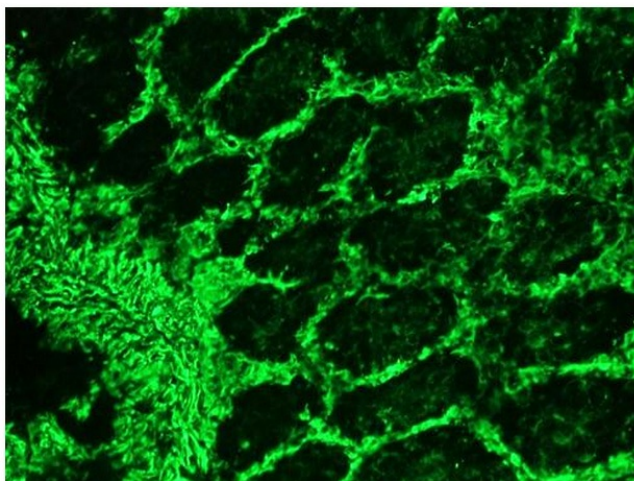
Frozen Section of Swine colon immunostained with RV202-FITC Vimentin Antibody Cat.-No BM6008F (1/200)



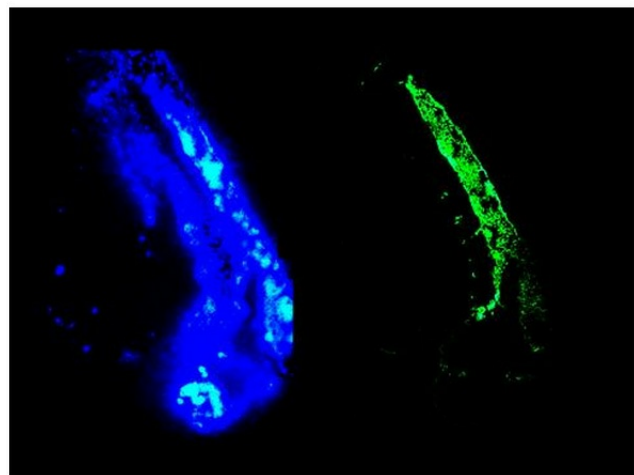
Immunohistochemistry on paraffin section of human colon.



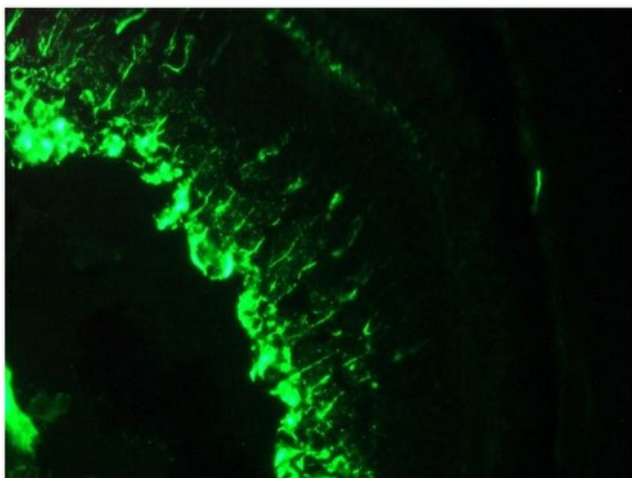
Frozen Section of Swine colon immunostained with RV202-HRP Vimentin Antibody Cat.-No [BM6008HRP] (1/200).



Immunohistochemistry using Vimentin Antibody Cat.-No [BM6008P] on Frozen Section of Swine colon showing positive staining in connective tissue cells and no reactivity in epithelial cells.



Immunofluorescence staining of the developing neural tube in a 2 days old zebrafish embryo. Left panel: DAPI-staining of cell nuclei, providing an overview of the tissue section used for immunostaining.



Immunofluorescence staining of a 1 month old zebrafish embryo.