

Product datasheet for **BM6006P**

Cytokeratin 18 (KRT18) Mouse Monoclonal Antibody [Clone ID: RCK106]

Product data:

Product Type:	Primary Antibodies
Clone Name:	RCK106
Applications:	FC, IF, IHC, WB
Recommended Dilution:	Immunocytochemistry. Immunohistochemistry on Frozen Sections. Immunohistochemistry on Paraffin Sections. Immunoblotting. Flow Cytometry. <i>Recommended Dilutions:</i> 1/100–1/200 for flow cytometry, and for immunohistochemistry with avidin-biotinylated horseradish peroxidase complex (ABC) as detection reagent, and 1/100–1/1000 for immunoblotting applications.
Reactivity:	Human
Host:	Mouse
Isotype:	IgG1
Clonality:	Monoclonal
Immunogen:	Cytokeratins from the Human bladder carcinoma cell line T24.
Specificity:	<i>RCK106</i> reacts exclusively with Cytokeratin 18 in glandular epithelial cells of the digestive, respiratory, and urogenital tracts, endocrine and exocrine cells and mesothelial cells, as well as adenocarcinomas originating from them. Reacts with Human exclusively.
Formulation:	PBS State: Purified State: Liquid purified IgG fraction Preservative: 0.09% Sodium Azide
Concentration:	lot specific
Conjugation:	Unconjugated
Storage:	Store undiluted at 2-8°C for one month or (in aliquots) at -20°C for longer. Avoid repeated freeze-thaw cycles.
Stability:	Shelf life: One year from despatch.



[View online »](#)

Gene Name: keratin 18

Database Link: [Entrez Gene 3875 Human P05783](#)

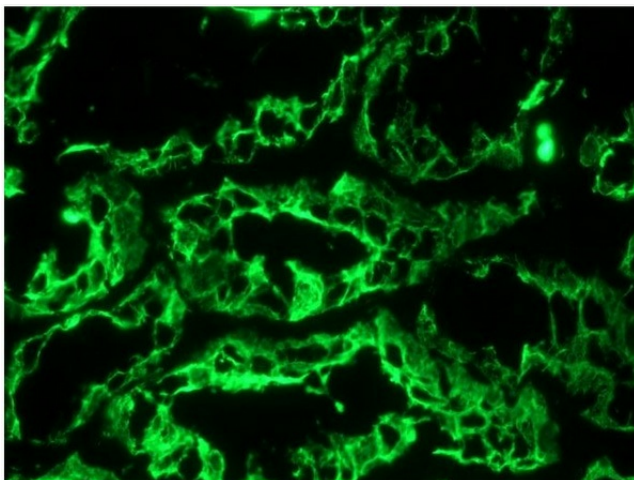
Background: Cytokeratins are a subfamily of intermediate filament proteins and are characterized by a remarkable biochemical diversity, represented in human epithelial tissues by at least 20 different polypeptides. They range in molecular weight between 40 kDa and 68 kDa and isoelectric pH between 4.9-7.8. The individual human cytokeratins are numbered 1 to 20. The various epithelia in the human body usually express cytokeratins which are not only characteristic of the type of epithelium, but also related to the degree of maturation or differentiation within an epithelium. Cytokeratin subtype expression patterns are used to an increasing extent in the distinction of different types of epithelial malignancies. The cytokeratin antibodies are not only of assistance in the differential diagnosis of tumors using immunohistochemistry on tissue sections, but are also a useful tool in cytopathology and flow cytometric assays.

Synonyms: Cytokeratin-18, CK18, Keratin-18, Keratin 18, KRT18, CYK18, K18

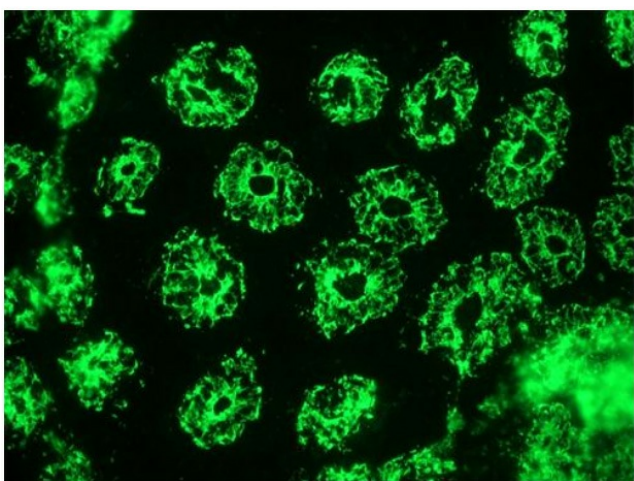
Product images:



Immunohistochemistry on Paraffin Section of Human colon



Immunohistochemistry on Frozen Section of Human kidney



Immunohistochemistry on Frozen Section of Human small intestine