

Product datasheet for **BM555S**

pan Cytokeratin (4+5+6+8+10+13+18) Mouse Monoclonal Antibody [Clone ID: C-11]

Product data:

Product Type:	Primary Antibodies
Clone Name:	C-11
Applications:	FC, IF, IHC, IP, WB
Recommended Dilution:	Western Blot. Flow Cytometry: 0.5 µg/ml. Immunoprecipitation. Immunocytochemistry. Immunohistochemistry on Paraffin Sections.
Reactivity:	Mammalian, Amphibian
Host:	Mouse
Isotype:	IgG1
Clonality:	Monoclonal
Immunogen:	Keratin-enriched preparation from human epidermoid carcinoma cell line A431
Specificity:	The antibody reacts with Cytokeratin peptides 4, 5, 6, 8, 10, 13, 18 (recognized epitope conserved within all species). Cytokeratins are a member of intermediate filaments subfamily represented in epithelial tissues.
Formulation:	PBS, pH~7.4 State: Purified State: Liquid purified Ig fraction (> 95% pure by SDS-PAGE) Preservative: 15 mM Sodium Azide
Concentration:	lot specific
Purification:	Affinity Chromatography on Protein A
Conjugation:	Unconjugated
Storage:	Store undiluted at 2-8°C. DO NOT FREEZE!
Stability:	Shelf life: one year from despatch.



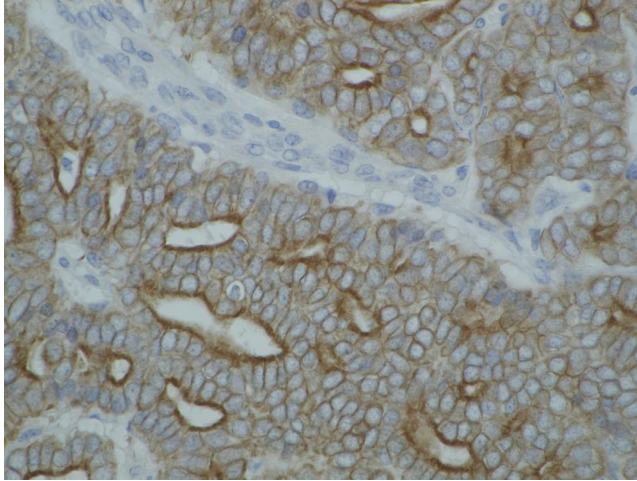
[View online »](#)

Background:

Cytokeratins are a subfamily of intermediate filaments and characterized by remarkable biochemical diversity. Cytokeratins are represented in epithelial tissues by at least 20 different polypeptides, molecular weight between 40 kDa and 68 kDa. The individual cytokeratin polypeptides are designated 1 to 20 and divided into the type I (acidic cytokeratins 9-20) and type II (basic to neutral cytokeratins 1-8) families.

Synonyms:

pan Keratin, Cytokeratin pan-reactive

Product images:

Detection of cytokeratin on paraffin-embedded sections of guinea pig breast carcinoma using anti-cytokeratin antibody (C-11).

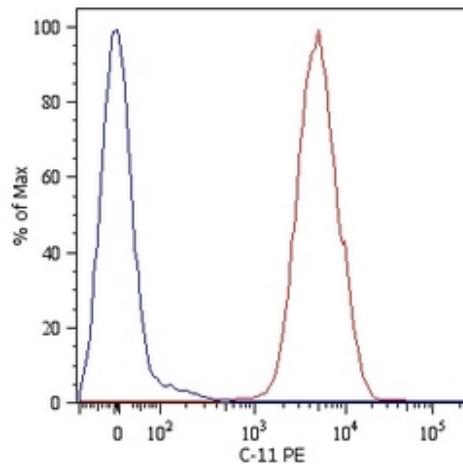


Figure 1. Intracellular flow cytometry analysis of cytokeratin expression in HT-29 human Caucasian colon adenocarcinoma cell line using anti-cytokeratin antibody (C-11) PE. Overlay with Isotype Mouse IgG1 control (PPV-06, cat. [AM03095RP-N])