

## Product datasheet for **BM555R**

### pan Cytokeratin (4+5+6+8+10+13+18) Mouse Monoclonal Antibody [Clone ID: C-11]

#### Product data:

Product Type:	Primary Antibodies
Clone Name:	C-11
Applications:	FC
Recommended Dilution:	Suitable for <b>Flow Cytometry</b> analysis. It is recommended to use 10-20 $\mu$ l of antibody conjugate per $10^6$ cells (100 $\mu$ l cell suspension).
Reactivity:	Mammalian, Amphibian
Host:	Mouse
Isotype:	IgG1
Clonality:	Monoclonal
Immunogen:	Keratin-enriched preparation from human epidermoid carcinoma cell line A431.
Specificity:	The Monoclonal antibody <i>C-11</i> reacts with Cytokeratin peptides 4, 5, 6, 8, 10, 13, 18. Cytokeratins are a member of intermediate filaments subfamily represented in epithelial tissues.
Formulation:	Stabilizing PBS Label: PE State: Liquid purified IgG fraction Preservative: 15 mM Sodium Azide Label: Conjugated with R-Phycoerythrin under optimum conditions
Concentration:	lot specific
Purification:	Size-Exclusion Chromatography
Conjugation:	PE
Storage:	Store the antibody undiluted at 2-8°C. <b>DO NOT FREEZE!</b> This product is photosensitive and should be protected from light.
Stability:	Shelf life: one year from despatch.



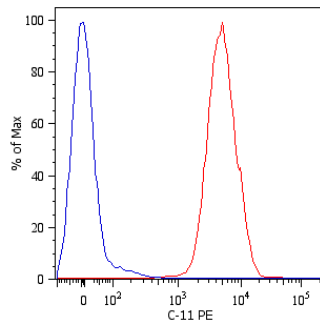
[View online »](#)

**Background:**

**Cytokeratins** are a subfamily of intermediate filaments and characterized by remarkable biochemical diversity. Cytokeratins are represented in epithelial tissues by at least 20 different polypeptides, molecular weight between 40 kDa and 68 kDa. The individual cytokeratin polypeptides are designated 1 to 20 and divided into the type I (acidic cytokeratins 9-20) and type II (basic to neutral cytokeratins 1-8) families.

**Synonyms:**

pan Keratin, Cytokeratin pan-reactive

**Product images:**

Intracellular flow cytometry analysis of cytokeratin expression in HT-29 human Caucasian colon adenocarcinoma cell line using anti-cytokeratin antibody (C-11) PE. Overlay with isotype mouse IgG1 control