

Product datasheet for **BM555AC**

pan Cytokeratin (4+5+6+8+10+13+18) Mouse Monoclonal Antibody [Clone ID: C-11]

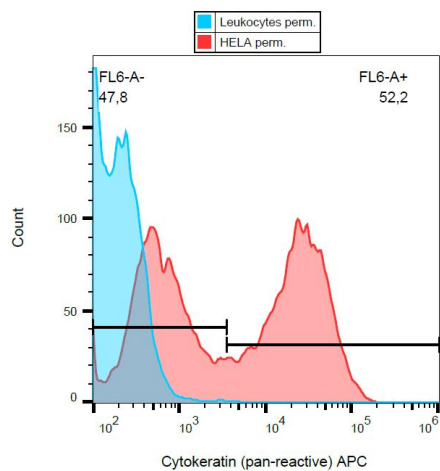
Product data:

Product Type:	Primary Antibodies
Clone Name:	C-11
Applications:	FC
Recommended Dilution:	Suitable for Flow Cytometry analysis (5 µg/ml).
Reactivity:	Mammalian, Amphibian
Host:	Mouse
Isotype:	IgG1
Clonality:	Monoclonal
Immunogen:	Keratin-enriched preparation from human epidermoid carcinoma cell line A431.
Specificity:	The antibody C-11 reacts with Cytokeratin peptides 4, 5, 6, 8, 10, 13 and 18.
Formulation:	Stabilizing phosphate buffered saline (PBS) solution containing 15mM Sodium Azide. Label: APC State: Liquid purified IgG fraction. Label: Conjugated with cross-linked Allophycocyanin under optimum
Concentration:	lot specific
Purification:	Size-Exclusion Chromatography.
Conjugation:	APC
Storage:	Store the antibody in the dark at 2-8°C. DO NOT FREEZE! Avoid prolonged exposure to light.
Stability:	Shelf life: one year from despatch.
Background:	Cytokeratins are a subfamily of intermediate filaments and characterized by remarkable biochemical diversity. Cytokeratins are represented in epithelial tissues by at least 20 different polypeptides, molecular weight between 40 kDa and 68 kDa. The individual cytokeratin polypeptides are designated 1 to 20 and divided into the type I (acidic cytokeratins 9-20) and type II (basic to neutral cytokeratins 1-8) families.
Synonyms:	pan Keratin, Cytokeratin pan-reactive



[View online »](#)

Product images:



Intracellular flow cytometry analysis of cytochrome expression in HeLa cells using anti-cytochrome antibody (C-11) APC.